



Dear Coach House Owner:

We would like to take this opportunity to thank you for purchasing one of our Coach House Platinum Motor Homes and welcome you to the Coach House Family. As part of our family, we will send you complimentary issues of our CHOC Talk Newsletter, keeping you informed on our Owners Club events, news and a little information regarding our company.

In addition we have enclosed an invitation to join our club, the CHOC (Coach House Owner's Club), which has been in existence since 1999 and has members from all across the country. Club members enjoy their own rallies, caravans, and fun times. They are a sub-chapter of FMCA (Family Motor Coach Association), which offers an extensive list of additional benefits from which to choose, participate and enjoy. Please take a moment to review the enclosed information and see if these benefits are right for you.

If you need answers to questions about either organization, please call the numbers listed on the membership applications. If we can answer any questions about your Coach House Platinum Motor Home, please call us on our toll-free number, 1-800-235-0984.

Sincerely,

Steve Gerzeny
Vice President
Coach House, Inc.



Coach House,® Inc.

INTRODUCTION

Every effort has been made to build the Coach House to the highest quality standards. To help you obtain the most enjoyment and safety while using your Coach House, we strongly urge you to carefully review this owner's manual, paying particular attention to the areas that discuss safety. Some items discussed are optional and only need to be reviewed if that option is part of your Coach House.

The Coach House owner's manual is comprised of the following three parts:

1. Owners Manual – The Chassis Owners Manual is supplied by the chassis manufacturer and covers all the chassis components supplied by the chassis manufacturer.
2. RV Owners Manual (RV0-2) – This manual is a general guide for RV owners.
3. Indexed Appliance Manual – A loose leaf manual with instruction and maintenance manuals from the manufacturers of the appliances install by Coach House with additional notes where deemed necessary.

This manual is meant to give the owner a good understanding of the Coach House and the dealer should be consulted for any further information desired.

3/28/03

REPORTING SAFETY DEFECTS

If you believe that your vehicle has a defect, which could cause a crash or could cause injury or death, you should immediately inform the National Highway Traffic Safety Administration (NHTSA) in addition to notifying Coach House Inc.

If NHTSA receives similar complaints, it may open an investigation, and if it finds that a safety defect exists in a group of vehicles, it may order a recall and remedy campaign. However, NHTSA cannot become involved in individual problems between you, your dealer, or Coach House Inc.

To contact NHTSA, you may either call the Auto Safety Hotline toll-free at 1-800-424-9393 (or 366-0123 in Washington, DC area) or write to: NHTSA, U.S. Department of Transportation, Washington, D.C. 20590, or Internet address www.NHTSA.dot.gov. You can also obtain other information about motor vehicle safety from the Hotline.

APPLIANCE WARRANTY INFORMATION

Appliances installed by Coach House are warranted by the individual appliance manufactures; refer to the Coach House Limited Warranty. Some of the manufacturers include a list of authorized service centers with their instruction manuals. The following is a partial list of appliance manufacturers with their phone numbers you should call if you experience any problems while under warranty.

Appliance/Item	Manf.	Location	Phone No.
Air Conditioner	Dometic	LaGrange, IN	(888)867-4188
Awning	Fiamma	Orlando, FL	(407)672-0091
Awning (slide)	Dometic	LaGrange, IN	(574)294-2511
Converter	Parallax	Anderson, IN	(800)443-4859
Furnace	Suburban	Dayton, TN	(423)775-2131
Furnace	Atwood	Greenbriar, TN	(800)825-4328
Generator	Onan	Minneapolis, MN	(800)888-6626
Diesel Generator	Power Tech	Denver, CO	(352)365-2777
Home Theater	Toshiba	Denver, CO	(800)575-5469
Home Theater	Bose	Framingham, MA	(800)367-4008
Inverter	Dimensions	St. Paul, MN	(800)553-6418
Isolator	SurePower	Tualatin, OR	(503)692-5360
LP Tank	Manchester	Lynwood, CA	(800)640-6327
Microwave	Sylvania	City of Industry, PA	(574)848-2294
Range	Atwood	Greenbriar, TN	(800)825-4328
Range	Dometic	LaGrange, IN	(574)294-2511
Range Hood	Ventline	Bristol, IN	(219)848-4491
Monitor Panel	Ventline	Bristol, IN	(219)848-4491
Refrigerator	Dometic	LaGrange, IN	(574)294-2511
Roof Vent	Fantastic	Imlay City, MI	(800)521-0298
Steps, Electric	Kwikkee	Cottage Grove, OR	(541)942-3888
TV	Toshiba	Denver, CO	(800)575-5469
TV Antenna	Mini-State	W Burlington, IA	(319)758-8050
Water Closet	Thetford	Ann Arbor, MI	(800)543-1219
Water Heater (240/241)	Suburban	Dayton, TN	(423)775-2131
(221/232/261/272)	Atwood	Greenbriar, TN	(800)825-4328
Ride-Rite	Firestone	Chicago, IL	(800)888-0650

WEIGHT & TOWING

SAMPLE LABEL

MAXIMUM HOME OCCUPANT AND CARGO CARRYING CAPACITY VIN: [REDACTED]
THE COMBINED WEIGHT OF OCCUPANTS AND CARGO SHOULD NEVER EXCEED 836 kg or 1842 lbs
Safety belt equipped seating capacity: 2
CAUTION:
A full load of water equals 151 kg or 332 lbs of cargo @ 1 kg/L (8.3 lb/gal) and the tongue
weight of a towed trailer counts as cargo

CAUTION: LOAD CARRYING CAPACITY REDUCED
Modifications to this vehicle have reduced the original load carrying capacity by
kg or lbs

NOTE: A label similar to the sample shown has been placed on the inside of the closet door with weight information for your vehicle. If after the UVW part of the label "CALC." appears, this indicates that the UNLOADED VEHICLE WEIGHT has been calculated by using typical completed model actual weights and making adjustments for certain options.

VEHICLE WEIGHT DISTRIBUTION

To properly load your vehicle, first determine its empty weight axle by axle and compare this with the GROSS AXLE WEIGHT RATING (GAWR), which can be found on the FMVSS sticker, located on the drivers door column. Try to load your vehicle in a manner that proportionally loads the axles according to their available loading capacity. Make sure that your total weight

does not exceed the GVWR for your vehicle being aware that the total of the axle ratings (GAWR) can add up to more than the GVWR. Side to side weight distribution should be considered when loading your vehicle and adjustments made as deemed suitable. It is recommended that you weigh your vehicle (axle by axle) when fully loaded especially if the load is close to the NET CARRYING CAPACITY (NCC) indicated on the MOTORHOME WEIGHT INFORMATION label for your vehicle to assure that none of the weight capacities have been exceeded. After weighing, make any load adjustments necessary to insure proper vehicle handling and performance.

WEIGHING YOUR VEHICLE

You can usually have your vehicle weighed at a local landfill or at a large truck stop. As discussed under weight distribution, you should weigh each axle to assure uniform loading.

TOWING GUIDE LINES

To determine the towing capability of your vehicle, first refer to the chassis manufacturers Owners Manual and/or manufacturers literature that covers your vehicle. Information on your vehicle you need to know is the GROSS COMBINATION WEIGHT RATING (GCWR), maximum trailer weight, maximum tongue weight and the weight of your vehicle fully loaded. After determining the above information you can calculate the maximum size trailer you can tow by subtracting your loaded vehicle weight from the GCWR and compare the answer with the maximum trailer weight for your vehicle. Which ever figure is **smaller** will determine the maximum towing capacity (Loaded Trailer Weight) for your vehicle.

TOWING GUIDELINES (CONT'D)

It is also important to make sure that the tongue weight for your loaded trailer does not exceed the chassis manufacturers rating. Also check the capacity of the hitch installed to make sure you have not exceeded its rating.

<u>Ford</u>	<u>Freightliner</u>
Standard Hitch – Reese – Class 3	Standard – Class 3
Max Trailer Weight – 5000 lbs	Max Trailer Weight 3500 lbs.
Max Tongue Weight – 200 lbs.	Max Tongue Weight 100 lbs.

Recommended Tire Pressure

Model #	<u>232</u>	<u>240/241</u>	<u>261/271</u>	<u>272XL</u>
Front	65	65	65	65
Rear	65	65	75	75

*Unless loading conditions require additional pressure

Firestone Air				
Ride	20 PSI	30-50 PSI	45-50 PSI	55 PSI

EXTERIOR BODY CARE:

Please see following instruction sheets on caring for your Coach House exterior.

Premium Paint Care:

Your Coach House Platinum with optional base coat/clearcoat premium paint by B.A.S.F. has the best automotive finish available. Wash the finish with mild soap & water.

The finish may be waxed with an automotive wax with “safe for clear coat” feature.

ELECTRICAL SYSTEM

POWER CONVERTER

The Coach House is equipped with a power converter that supplies the motorhome with 120 volts AC and 12 volts DC. The source of power can be from the auxiliary 12 volt batteries, the 120 volt external power cord, or the generator. The converter is equipped with an automatic switch over relay to prevent both the generator and the external power cord from being connected to the converter at the same time. When either the external power cord or the generator is being used, both the 120 volt AC system and the 12 volt DC system will be activated inside the motorhome. When neither of these is connected, the 12 volt auxiliary batteries will activate only the 12 volt DC system.

Power Converter Location:

- 221 - Under Rear dinette Seat
- 232 - Drivers side under closet
- 240/241 - Drivers side under closet
- 261 - Passengers side under dry storage cabinet
- 272 - Drivers side, bedroom – under drawers

CIRCUIT BREAKER & FUSES

The location of the power converter can be found by looking for a brown metal cover (Approx. 6" x 12"), with a hinged door.

- 221/232 - Under closet
- 240/241 - Under pantry or passenger side twin bed
- 261 - Under dry storage locker
- 272 - Under rear closet

By turning the knob on top, the door can be opened and the circuit breakers and fuses can be located. The 120 volt AC breakers are located on the left with the first breaker on the left being the main and the remaining breakers are for the circuits as labeled on the door. The 12 volt DC fuses are the automotive push in type links and are located on the right side. The 12 volt DC circuits are labeled on the door.

CAUTION

Whenever working on the electrical system, the system or circuit being worked on should be deactivated by disconnecting the power and/or throwing the main circuit breaker and safe procedures should be followed to prevent electrical shock. Any modifications made to the system should only be done by a professional to assure compliance with the codes and to assure safe installation practices.

GENERATOR

Your Coach House is equipped with a 4000 w. Onan Microquite generator (Ford Powered Models). A diesel engine vehicle has an Onan 3.6kw LPG (propane) Microquite generator. A Power Tech diesel generator is also available for the diesel powered Platinum. The instruction manual supplied with the generator, enclosed in this section, should be carefully reviewed. Care should be taken not to exceed the capacity of the generator to prevent any possible damage to the generator. The optional generator for the 240/241 model are:

3.6 KW LPG Onan

AUXILIARY BATTERIES

Deep Cycle – 127	2- Standard	3- Optional (Ford)
	1- Standard	2- Optional (Freightliner)

The auxiliary batteries are located under the passenger side floor on a slide-out container. The auxiliary batteries are charged either by the alternator of the motor home while driving or from the power converter when external 120 volt AC power is connected or when the generator is in operation. The engine battery of the motor home is not charged from the power converter. The battery should be periodically checked and maintained. Refer to the RV Owners Manual.

AUXILIARY BATTERIES (CONT'D)

Care should be taken to prevent the auxiliary batteries from being totally discharged by making sure that all of the lights, fans, and appliances are turned off when the motor home is not in use. Whenever the motor home is not used for a period of time, the 120-volt power cord should be plugged in once a month for 8 to 12 hours to bring up the charge on the auxiliary batteries. The master 12v electric switch (found on the face of the cabinet behind the passenger seat) must be ON for the converter charger to charge the auxiliary batteries. Refer to the power center instruction sheet for further information. A totally discharged battery will not normally recharge as quickly or in the same manner as a low battery. Professional help should be used when attempting to charge a totally discharged battery.

80 AMP BREAKER

The 80 amp breaker is located near the auxiliary batteries. On the 232/240/241 models, the breaker is located on the front edge of the galley – lower cabinet. On the 221/261 models, the breaker is located under the dinette (front). The 272 breaker is located behind the lounge chair on the galley cabinet. The red button will pop out if overload occurs. Push in the red button to reset.

BATTERY SWITCH

The battery switch is located at the exterior side door – on the cabinet behind the passenger seat. Auxiliary batteries are being used when the switch is in the on position. Always turn battery switch to the off position when motor home is not being used, to prevent the auxiliary batteries from being drained.

NOTE: Auxiliary batteries will NOT charge from engine alternator or converter with battery switch in OFF position.

MAINTENANCE OF BATTERIES

See battery manual for complete info on maintenance of batteries.

GFCI RECEPTACLE

A GFCI receptacle is different from conventional receptacles. In the event of a ground fault, a GFCI will trip and quickly stop the flow of electricity to prevent serious injury. The Platinum has a GFCI in the galley and the bathroom. See the GFCI manual for more information.

SOLAR CHARGER (Optional)

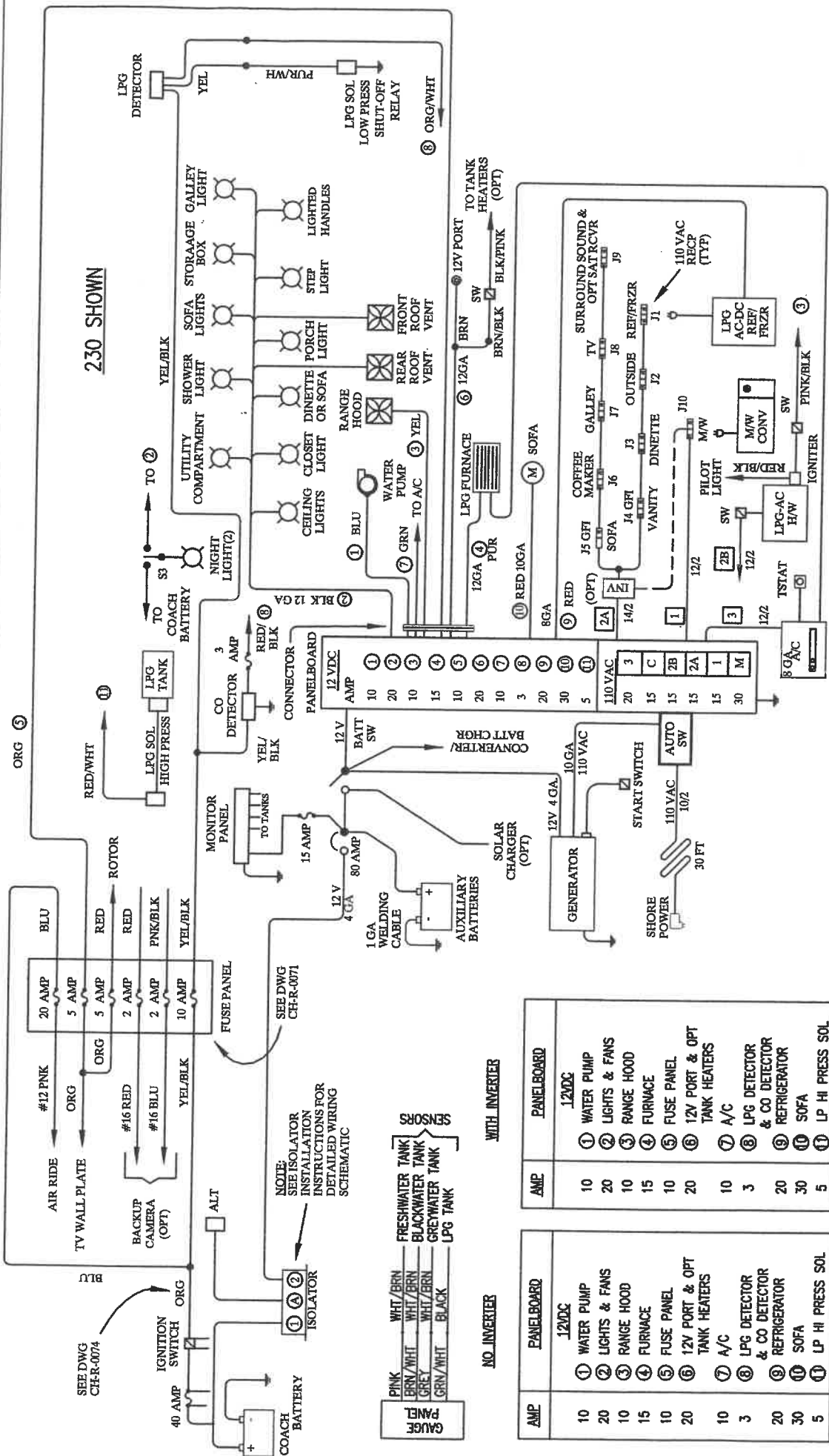
The solar charger (5-watt) will charge (trickle) the auxiliary batteries directly with the master 12v switch on or off – when in direct sunlight.

POSSIBLE RV CURRENT DRAWS

The following is a list of possible 12v current draws when a camper is not being used. Not included are the obvious items such as refrigerators, furnaces and lights.

1. LP Monitor and Solenoid Valve (Low Pressure)
Turn off at monitor since it is only needed when using an LP appliance.
2. C.O. Monitor
Small draw (.04A) Remove fuses behind monitor for long term storage. Remember to replace fuses after storage. 12V electric from engine battery (w/fuse) and auxiliary batteries w/fuse at electric power center.
3. Toilet area and closet lights
Does not automatically shut-off when doors are closed in 221/232/261 models.
N/A on 240/241 models
Automatically shut-off in the 272 models.
4. Remote TV
Draws small current whenever plugged in. Unplug for long term storage.
5. Battery Switch
Turn battery switch to off position when the motor home is not being used.
6. LP Fill Switch (High Pressure) (All Ford powered models)
Push in to off position when the motor home is not being used.
7. Heated Power Outside Mirror
Switch to off position when heat is not required.
8. Combo Home Theater System (AM/FM/CD/VCR/DVD)

Push Power button off



0958	25	7-7-06	FUSE 11 HI PRESS SOL - CHANGE LABEL & DIAGRAM.
0913	24	2-9-06	ADD WIRE COLOR BOTH SIDES OF FUSE BLOCK.
0868	23	12-9-05	CHANGE FUSE PROTECTION FOR CO & LPG MONITORS.
0850	22	9-29-05	ADD YEL/BLK CIRCUIT TO FUSE PANEL.
0801	21	6-17-05	ADD NOTES 4 & 5, UPDATE 12 VDC CONVERTER LEGEND.

ECR	REV	DATE	DESCRIPTION
0958	25	7-7-06	FUSE 11 HI PRESS SOL - CHANGE LABEL & DIAGRAM.
0913	24	2-9-06	ADD WIRE COLOR BOTH SIDES OF FUSE BLOCK.
0868	23	12-9-05	CHANGE FUSE PROTECTION FOR CO & LPG MONITORS.
0850	22	9-29-05	ADD YEL/BLK CIRCUIT TO FUSE PANEL.
0801	21	6-17-05	ADD NOTES 4 & 5, UPDATE 12 VDC CONVERTER LEGEND.

NOTE:

- SOME ITEMS SHOWN ARE OPTIONAL.
- WIRING 14 GA UNLESS SPECIFIED.
- CIRCUIT BREAKER 1 NOT USED WITH INVERTER.
- CONVERTER CIRCUIT #1 = WATER PUMP SWITCH, RANGE HOOD FAN & LIGHT.
- CONVERTER CIRCUIT #3 = RANGE HOOD MONITOR PANEL.

NOTE:

1. SOME ITEMS SHOWN ARE OPTIONAL.
2. WIRING 14 GA UNLESS SPECIFIED.
3. CIRCUIT BREAKER 1 NOT USED WITH INVERTER.
4. CONVERTER CIRCUIT #1 = WATER PUMP SWITCH, RANGE HOOD FAN & LIGHT.
5. CONVERTER CIRCUIT #3 = RANGE HOOD MONITOR PANEL.



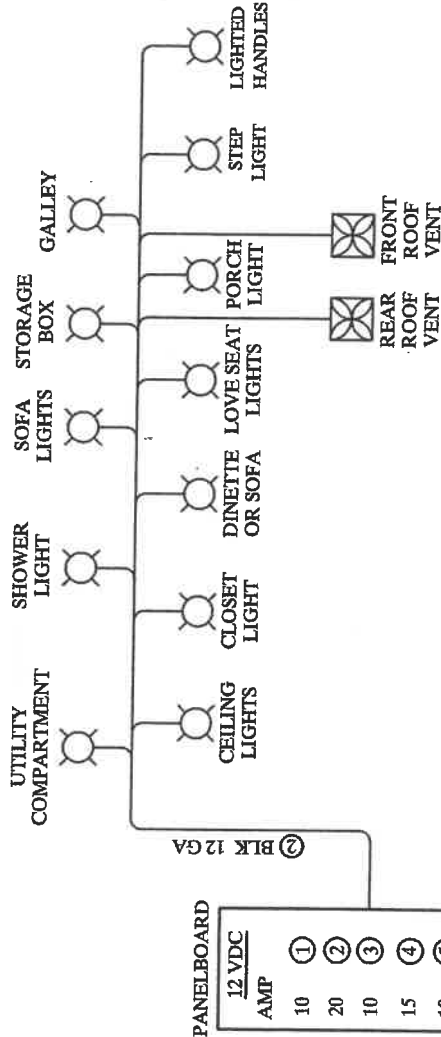
NO INVERTER

AMP	PANELBOARD
10	12VDC
20	1 WATER PUMP
10	2 LIGHTS & FANS
15	3 RANGE HOOD
10	4 FURNACE
20	5 FUSE PANEL
10	6 12V PORT & OPT TANK HEATERS
3	7 A/C
20	8 LPG DETECTOR & CO DETECTOR
30	9 REFRIGERATOR
5	10 SOFA
5	11 LP HI PRESS SOL
20	110VAC
15	3 A/C
15	12 V
15	2B WATER HEATER
15	2A OUTLETS
15	1 M/W
30	M MAIN

WITH INVERTER

AMP	PANELBOARD
10	12VDC
20	1 WATER PUMP
10	2 LIGHTS & FANS
15	3 RANGE HOOD
10	4 FURNACE
20	5 FUSE PANEL
20	6 12V PORT & OPT TANK HEATERS
10	7 A/C
3	8 LPG DETECTOR & CO DETECTOR
20	9 REFRIGERATOR
30	10 SOFA
5	11 LP HI PRESS SOL
20	110VAC
15	3 A/C
20	12 V
15	2A INVERTER OUTLETS
15	2B WATER HEATER
30	M MAIN

270 SHOWN
SAME AS 230 EXCEPT AS SHOWN



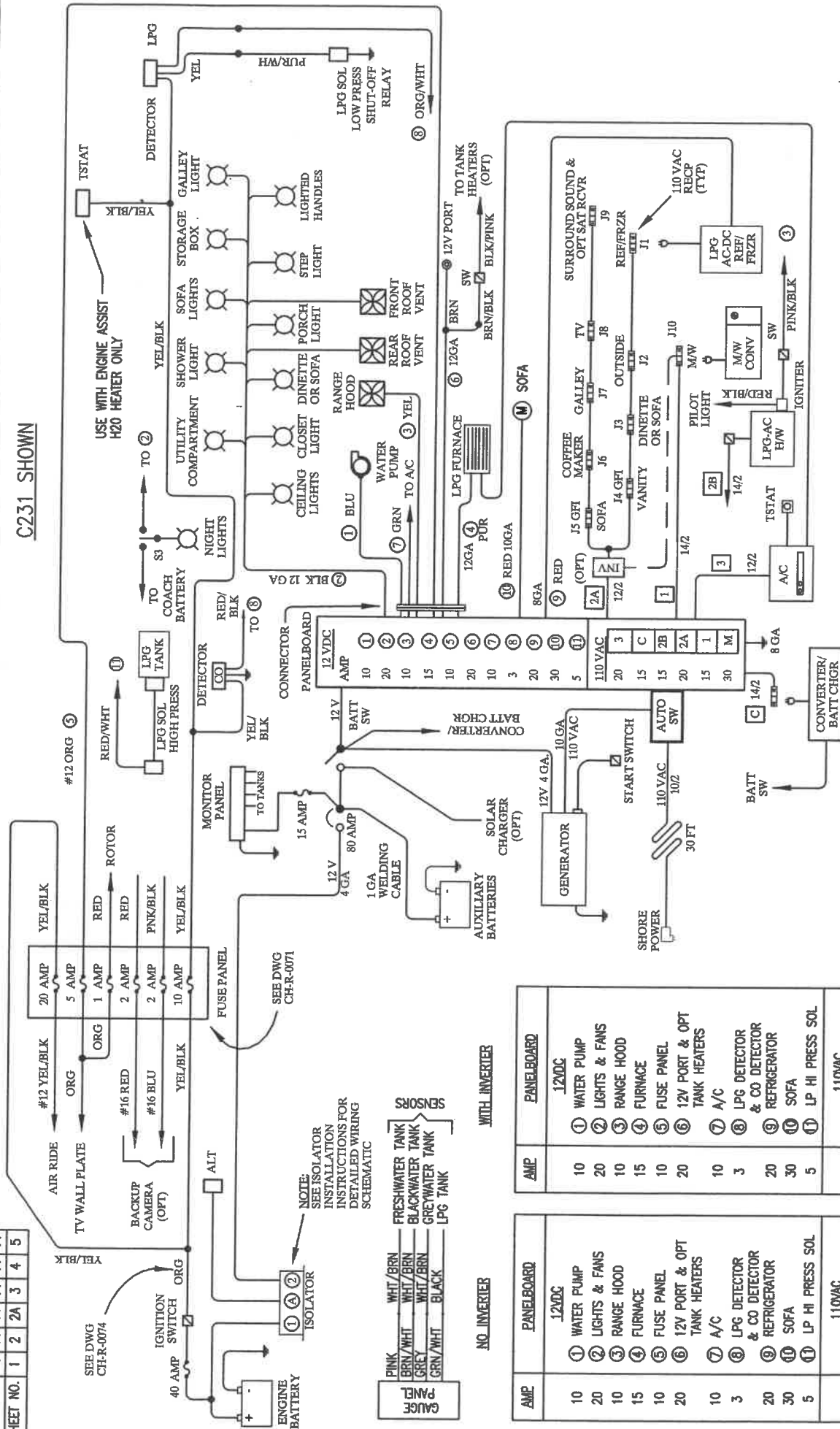
ECR	REV	DATE	DESCRIPTION
0958	25	7-7-06	FUSE 11 HI PRESS SOL - CHANGE LABEL & DIAGRAM.
0913	24	2-9-06	REVISE SHEET 1.
0868	23	12-9-05	REVISE SHEET 1.
0850	22	9-29-05	ADD YEL/BLK CIRCUIT TO FUSE PANEL TO SHEET 1.
0801	21	6-17-05	ADD NOTES 4 & 5, UPDATE 12 VDC CONVERTER LEGEND.

PLATINUM 110VAC & 12VDC
WIRING DIAGRAM
(NO SLIDEOUT)

Coach House
Van Motor Homes

No. EL105

C231 SHOWN



MAKE AIR RIDE WIRE YEL/BLK.

UPDATE CONVERTER CIRCUIT BREAKERS & WIRING & FUSE PANEL.

ADD SHEET 5 FOR M241XL & M240.

UPDATE SHEET 2A.

ADD SHEET 4.

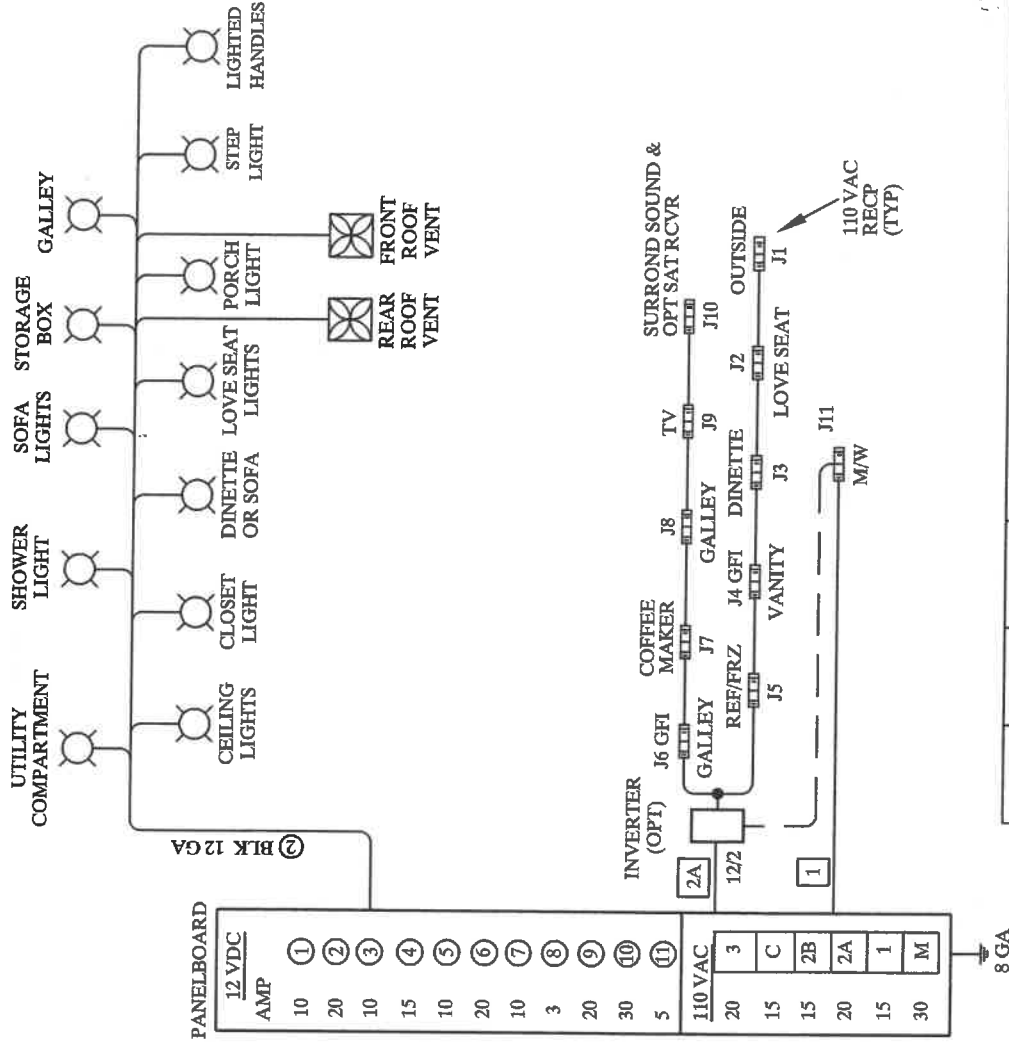
DESCRIPTION

PLATINUM 110VAC & 12VDC
WIRING DIAGRAM
(NEW SLIDEOUT)

Coach House
Van Motor Homes
No. EL108

NOTE:
1. SOME ITEMS SHOWN ARE OPTIONAL.
2. WIRING 14 GA UNLESS SPECIFIED.
3. CIRCUIT BREAKER 1 NOT USED WITH INVERTER.
4. CONVERTER CIRCUIT #1 = WATER PUMP SWITCH, RANGE HOOD FAN & LIGHT.
5. CONVERTER CIRCUIT #3 = RANGE HOOD MONITOR PANEL.

E271 SHOWN SAME AS C231 EXCEPT AS SHOWN



WITH INVERTER

NO INVERTER

AMP	PANELBOARD	AMP	PANELBOARD
10	12VDC	10	12VDC
20	1 WATER PUMP	20	1 WATER PUMP
10	2 LIGHTS & FANS	20	2 LIGHTS & FANS
15	3 RANGE HOOD	10	3 RANGE HOOD
10	4 FURNACE	15	4 FURNACE
20	5 FUSE PANEL	10	5 FUSE PANEL
20	6 12V PORT & OPT TANK HEATERS	20	6 12V PORT & OPT TANK HEATERS
10	7 A/C	10	7 A/C
3	8 LPG DETECTOR & CO DETECTOR	3	8 LPG DETECTOR & CO DETECTOR
20	9 REFRIGERATOR	20	9 REFRIGERATOR
30	10 SOFA	30	10 SOFA
5	11 LP HI PRESS SOL	5	11 LP HI PRESS SOL
20	110VAC	20	110VAC
15	3 A/C	15	3 A/C
15	12 V	15	12 V
20	2B WATER HEATER	20	2B WATER HEATER
15	2A OUTLETS	20	2A INVERTER OUTLETS
30	1 M/W	30	1 M/W
30	M MAIN	30	M MAIN

NOTE:

- SOME ITEMS SHOWN ARE OPTIONAL.
- WIRING 14 GA UNLESS SPECIFIED.
- CIRCUIT BREAKER 1. NOT USED WITH INVERTER.
- CONVERTER CIRCUIT #1 = WATER PUMP SWITCH, RANGE HOOD FAN & LIGHT.
- CONVERTER CIRCUIT #3 = RANGE HOOD MONITOR PANEL.

1200	14	6-9-08	UPDATE CONVERTER CIRCUIT BREAKERS & WIRING.
0958	10	7-7-06	FUSE 11 HI PRESS SOL - CHANGE LABEL & DIAGRAM.
0801	6	6-17-05	ADD NOTES 4 & 5, UPDATE 12 VDC CONVERTER LEGEND.
0755	5	3-25-05	UPDATE CONVERTER CIRCUIT BREAKER LOCATIONS.
0750	4	3-11-05	UPDATE OUTLET DESIGNATION.
ECR	REV	DATE	DESCRIPTION

PLATINUM 110VAC & 12VDC
WIRING DIAGRAM
(NEW SLIDEOUT)

Coach House
Van Motor Homes

D261 & J221 SHOWN
SAME AS C231 EXCEPT AS SHOWN

PANELBOARD

12 VDC AMP	1	2	3	4	5	6	7	8	9	10	11
10	20	10	15	10	20	10	3	20	30	5	
110 VAC	3	C	2B	2A	1	M					
20	15	15	20	15	30						

NO INVERTER

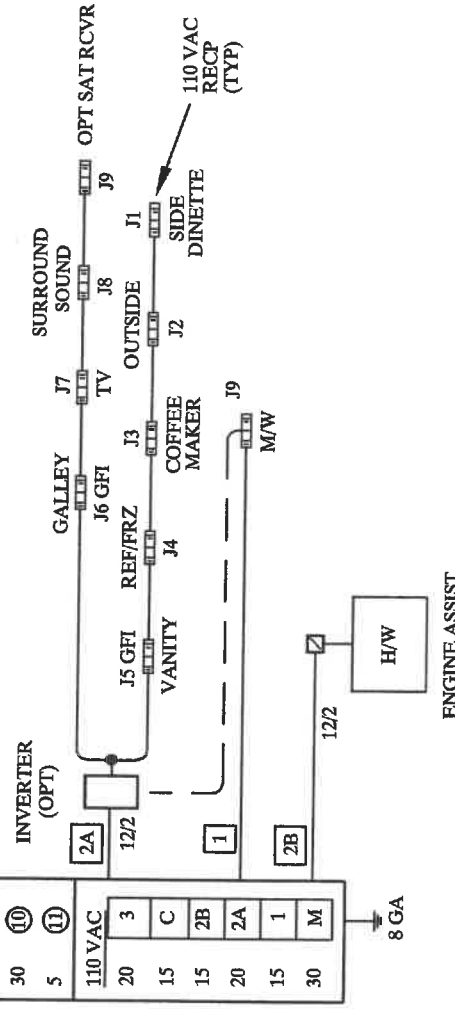
AMP	PANELBOARD
10	12VDC
20	1 WATER PUMP
10	2 LIGHTS & FANS
15	3 RANGE HOOD
10	4 FURNACE
20	5 FUSE PANEL
10	6 12V PORT & OPT TANK HEATERS
3	7 A/C
20	8 LPG DETECTOR & CO DETECTOR
30	9 REFRIGERATOR
5	10 SOFA
	11 LP HI PRESS SOL
20	110VAC
15	A/C
15	12 V
20	2B WATER HEATER
15	2A OUTLETS
30	1 M/W
	M MAIN

WITH INVERTER

AMP	PANELBOARD
10	12VDC
20	1 WATER PUMP
10	2 LIGHTS & FANS
15	3 RANGE HOOD
10	4 FURNACE
20	5 FUSE PANEL
10	6 12V PORT & OPT TANK HEATERS
3	7 A/C
20	8 LPG DETECTOR & CO DETECTOR
30	9 REFRIGERATOR
5	10 SOFA
	11 LP HI PRESS SOL
20	110VAC
15	A/C
15	12 V
20	2B WATER HEATER
30	2A INVERTER OUTLETS
	M MAIN

NOTE:

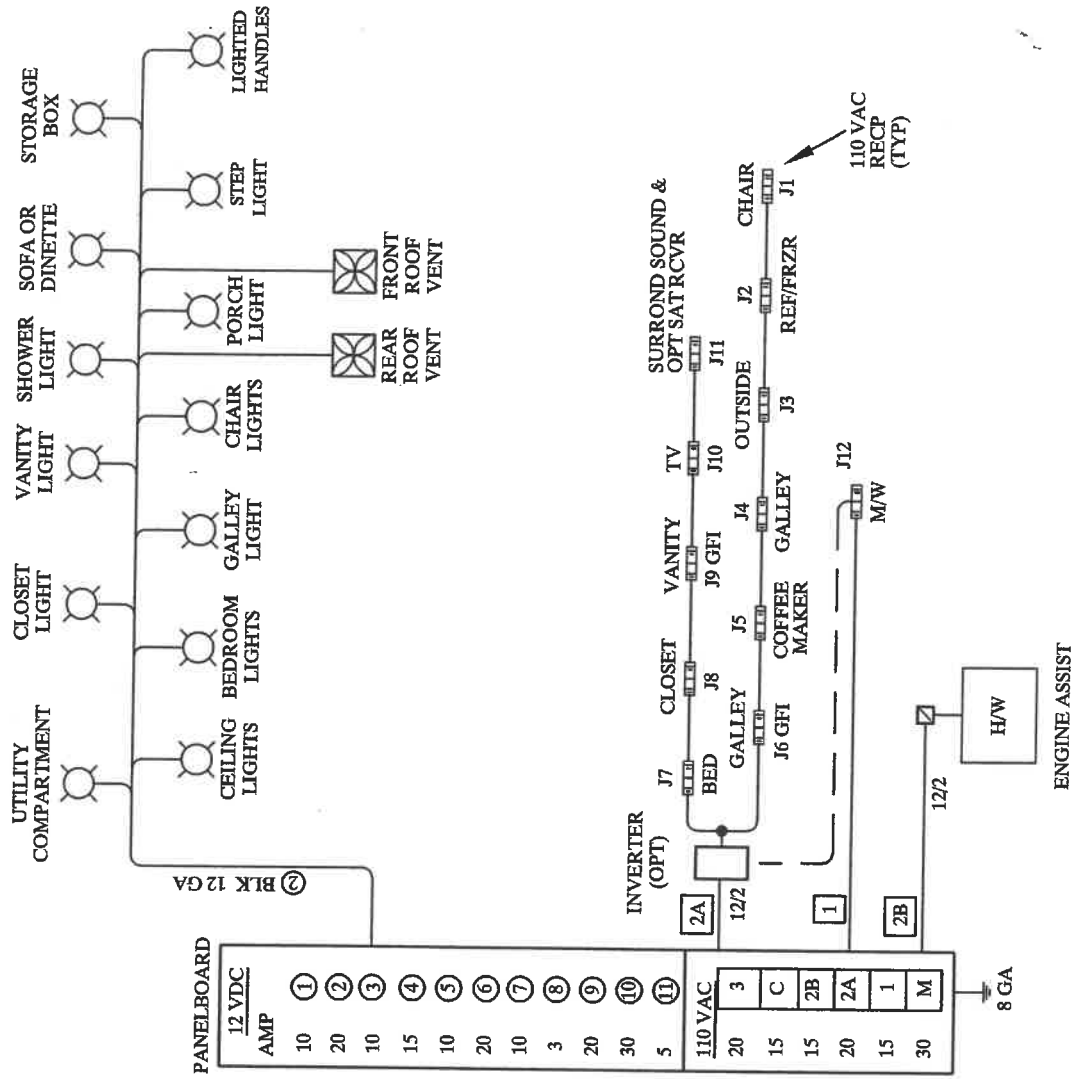
- SOME ITEMS SHOWN ARE OPTIONAL.
- WIRING 14 GA UNLESS SPECIFIED.
- CIRCUIT BREAKER 1 NOT USED WITH INVERTER.
- CONVERTER CIRCUIT #1 = WATER PUMP SWITCH, RANGE HOOD FAN & LIGHT.
- CONVERTER CIRCUIT #3 = RANGE HOOD MONITOR PANEL.



1200	14	6-9-08	UPDATE CONVERTER CIRCUIT BREAKERS & WIRING.
1058	12	3-19-07	ADD MODEL 221 & J9.
0958	10	7-7-06	FUSE 11 HI PRESS SOL - CHANGE LABEL & DIAGRAM.
0801	6	6-17-05	ADD NOTES 4 & 5, UKPDATE 12 VDC CONVERTER LEGEND.
0755	5	3-25-05	UPDATE CONVERTER CIRCUIT BREAKER LOCATIONS.
0750	4	3-11-05	UPDATE DESIGNATIONS OUTLET & WATER HEATER.

ECR	REV	DATE	DESCRIPTION
PLATINUM	110VAC & 12VDC		
WIRING DIAGRAM			
(NEW SLIDEOUT)			
			Coach House Van Motor Homes
			No. EL108

G272 SHOWN
SAME AS C231 EXCEPT AS SHOWN



WITH INVERTER

AMP	PANELBOARD	AMP	PANELBOARD
10	12VDC	10	12VDC
20	1 WATER PUMP	20	1 WATER PUMP
10	2 LIGHTS & FANS	20	2 LIGHTS & FANS
15	3 RANGE HOOD	10	3 RANGE HOOD
10	4 FURNACE	15	4 FURNACE
20	5 FUSE PANEL	10	5 FUSE PANEL
10	6 12V PORT & OPT TANK HEATERS	20	6 12V PORT & OPT TANK HEATERS
3	7 A/C	10	7 A/C
20	8 LPG DETECTOR & CO DETECTOR	3	8 LPG DETECTOR & CO DETECTOR
30	9 REFRIGERATOR	20	9 REFRIGERATOR
5	10 SOFA	30	10 SOFA
	11 LP HI PRESS SOL	5	11 LP HI PRESS SOL
20	110VAC	20	110VAC
15	A/C	15	A/C
15	12 V	15	12 V
20	WATER HEATER	15	WATER HEATER
15	OUTLETS	20	WATER HEATER
30	M/W	20	INVERTER OUTLETS
	MAIN	30	MAIN

NOTE:

- SOME ITEMS SHOWN ARE OPTIONAL.
- WIRING 14 GA UNLESS SPECIFIED.
- CIRCUIT BREAKER 1 NOT USED WITH INVERTER.
- CONVERTER CIRCUIT #1 = WATER PUMP SWITCH, RANGE HOOD FAN & LIGHT.
- CONVERTER CIRCUIT #3 = RANGE HOOD MONITOR PANEL.

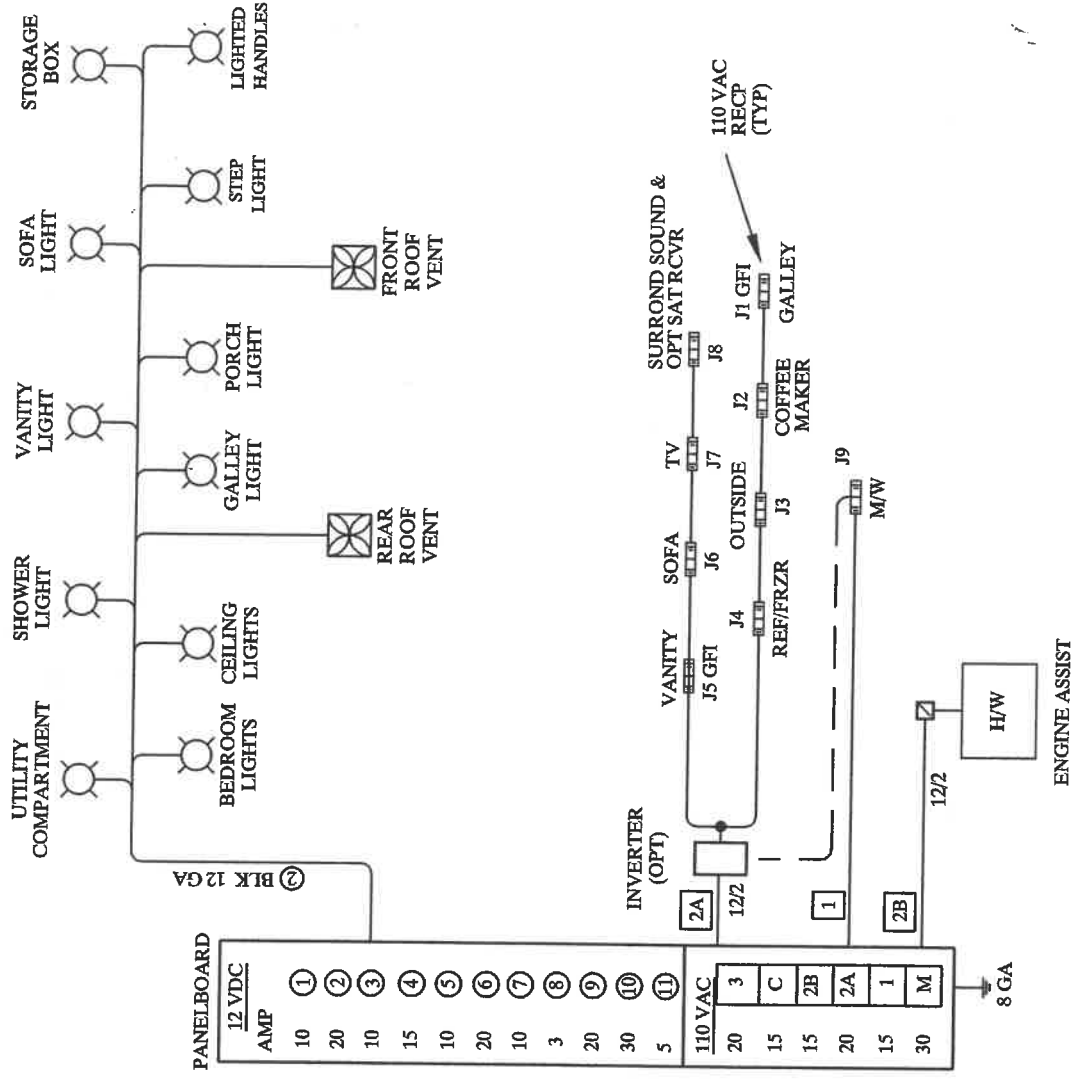
ECR	REV	DATE	DESCRIPTION
1200	14	6-9-08	UPDATE CIRCUIT BREAKERS & WIRING.
0958	10	7-7-06	FUSE 11 HI PRESS SOL - CHANGE LABEL & DIAGRAM.
0801	6	6-17-05	ADD NOTES 4 & 5, UPDATE 12 VDC CONVERTER LEGEND.

PLATINUM 110VAC & 12VDC
WIRING DIAGRAM
(NEW SLIDEOUT)

Coach House
Van Motor Homes

No. EL108

H232 SHOWN SAME AS C231 EXCEPT AS SHOWN



NO INVERTER

AMP	PANELBOARD	AMP	PANELBOARD
10	1 WATER PUMP	10	1 WATER PUMP
20	2 LIGHTS & FANS	20	2 LIGHTS & FANS
10	3 RANGE HOOD	10	3 RANGE HOOD
15	4 FURNACE	15	4 FURNACE
10	5 FUSE PANEL	10	5 FUSE PANEL
20	6 12V PORT & OPT TANK HEATERS	20	6 12V PORT & OPT TANK HEATERS
10	7 A/C	10	7 A/C
3	8 LPG DETECTOR & CO DETECTOR	3	8 LPG DETECTOR & CO DETECTOR
20	9 REFRIGERATOR	20	9 REFRIGERATOR
30	10 SOFA	30	10 SOFA
5	11 LP HI PRESS SOL	5	11 LP HI PRESS SOL
20	3 A/C	20	3 A/C
15	12 V	15	12 V
15	2B WATER HEATER	15	2B WATER HEATER
20	2A OUTLETS	20	2A OUTLETS
15	1 M/W	15	1 M/W
30	M MAIN	30	M MAIN

NOTE:

- SOME ITEMS SHOWN ARE OPTIONAL.
- WIRING 14 GA UNLESS SPECIFIED.
- CIRCUIT BREAKER 1 NOT USED WITH INVERTER.
- CONVERTER CIRCUIT #1 = WATER PUMP SWITCH, RANGE HOOD FAN & LIGHT.
- CONVERTER CIRCUIT #3 = RANGE HOOD MONITOR PANEL.

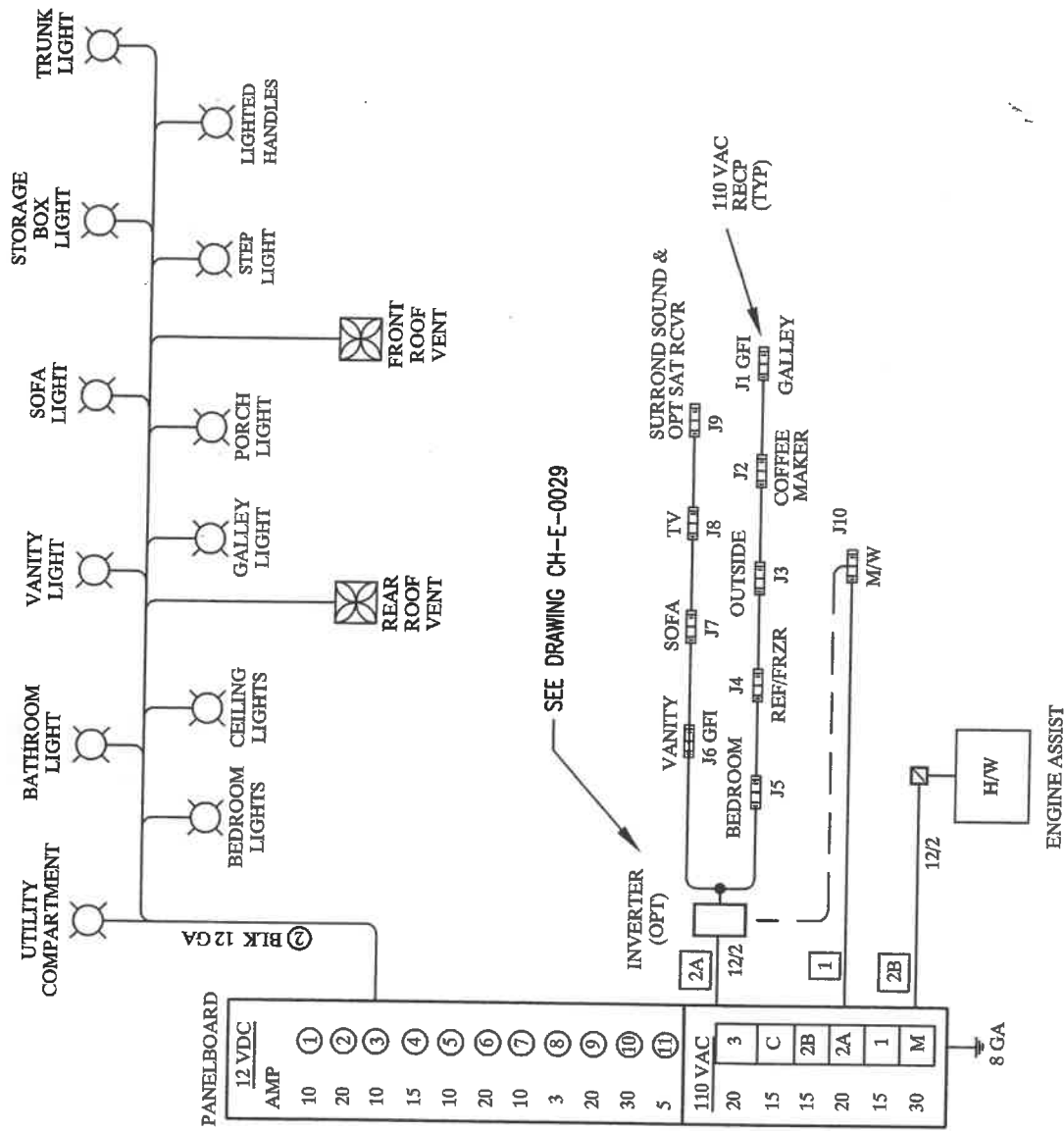
1200	14	6-9-08	UPDATE CONVERTER CIRCUIT BREAKERS & WIRING.
1025	11	12-12-06	ADD SHEET 4.
ECR	REV	DATE	

DESCRIPTION

PLATINUM 110VAC & 12VDC
WIRING DIAGRAM
(NEW SLIDEOUT)

Coach House
Van Motor Homes

M240 & M241 SHOWN SAME AS C231 EXCEPT AS SHOWN



WITH INVERTER

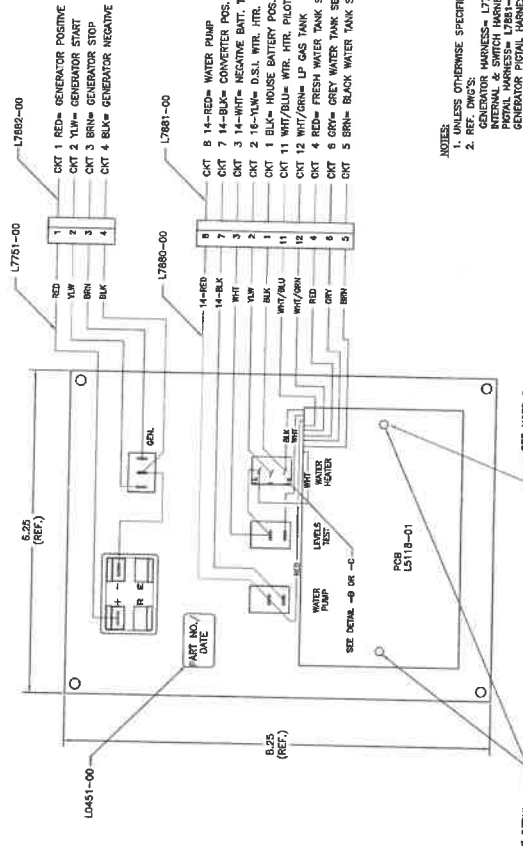
NO INVERTER

AMP	PANELBOARD	AMP	PANELBOARD
10	12VDC	10	12VDC
20	1 WATER PUMP	20	1 WATER PUMP
10	2 LIGHTS & FANS	20	2 LIGHTS & FANS
15	3 RANGE HOOD	10	3 RANGE HOOD
10	4 FURNACE	15	4 FURNACE
10	5 FUSE PANEL	10	5 FUSE PANEL
20	6 12V PORT & OPT TANK HEATERS	20	6 12V PORT & OPT TANK HEATERS
10	7 A/C	10	7 A/C
3	8 LPG DETECTOR & CO DETECTOR	3	8 LPG DETECTOR & CO DETECTOR
20	9 REFRIGERATOR	20	9 REFRIGERATOR
30	10 SOFA	30	10 SOFA
5	11 LP HI PRESS SOL	5	11 LP HI PRESS SOL
20	110VAC	20	110VAC
15	3 A/C	15	3 A/C
15	12 V	15	12 V
20	2B WATER HEATER	20	2B WATER HEATER
15	2A OUTLETS	20	2A INVERTER OUTLETS
30	1 M/W	30	1 M
	M		M
	MAIN		MAIN

NOTE:

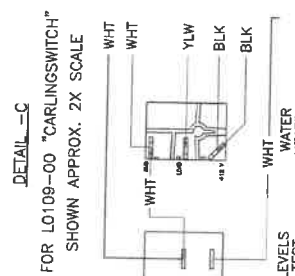
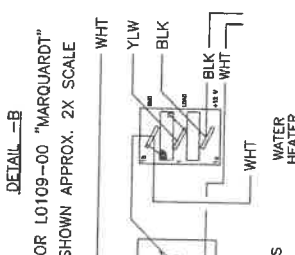
- SOME ITEMS SHOWN ARE OPTIONAL.
- WIRING 14 GA UNLESS SPECIFIED.
- CIRCUIT BREAKER 1 NOT USED WITH INVERTER.
- CONVERTER CIRCUIT #1 = WATER PUMP SWITCH, RANGE HOOD FAN & LIGHT.
- CONVERTER CIRCUIT #3 = RANGE HOOD MONITOR PANEL.

1200	14	6-9-08	UPDATE CONVERTER CIRCUIT BREAKERS & WIRING.
1161	13	2-28-08	ADD SHEET 5.
ECR	REV	DATE	DESCRIPTION
PLATINUM 110VAC & 12VDC WIRING DIAGRAM (NEW SLIDEOUT)			
Coach House Van Motor Homes			
No. EL108			



NOTES:

1. UNLESS OTHERWISE SPECIFIED ALL WIRE IS 22 AWG.
2. REF. DWG'S:
INTERNAL & SWITCH HARNESS= L7751-00
PICTIAL HARNESS= L7880-00
PICTIAL HARNESS= L7881-00
GENERATOR PICTAL HARNESS= L7882-00
PCB= L3116-01
TRM= L7452-00 (3 EA.)
TEST HARNESS= L7853-00
3. BEFORE PACKING, SECURE HARNESS WITH W00109-00 TIE WRAP ON RIGHT SIDE POST.



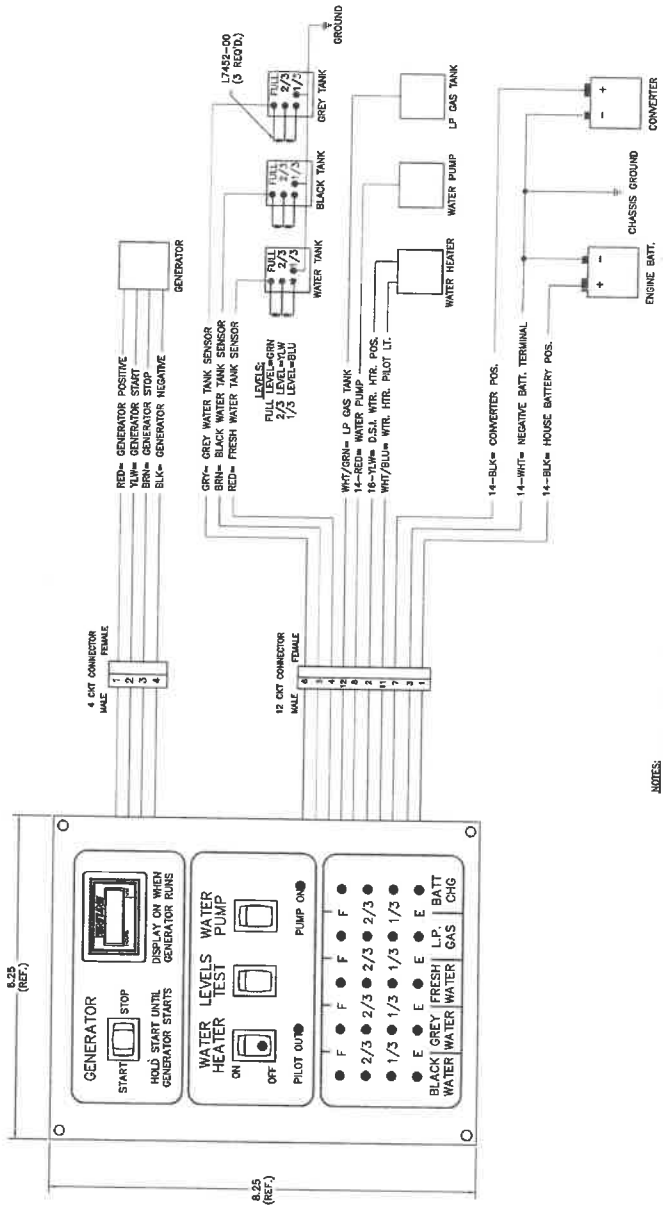
1	17881-00	1	17882-00	1	17883-00	1	17884-00	1	17885-00	1	17886-00	1	17887-00	1	17888-00	1	17889-00	1	17890-00	1	17891-00	1	17892-00	1	17893-00	1	17894-00	1	17895-00	1	17896-00	1	17897-00	1	17898-00	1	17899-00	1	17900-00	1	17901-00	1	17902-00	1	17903-00	1	17904-00	1	17905-00	1	17906-00	1	17907-00	1	17908-00	1	17909-00	1	17910-00	1	17911-00	1	17912-00	1	17913-00	1	17914-00	1	17915-00	1	17916-00	1	17917-00	1	17918-00	1	17919-00	1	17920-00	1	17921-00	1	17922-00	1	17923-00	1	17924-00	1	17925-00	1	17926-00	1	17927-00	1	17928-00	1	17929-00	1	17930-00	1	17931-00	1	17932-00	1	17933-00	1	17934-00	1	17935-00	1	17936-00	1	17937-00	1	17938-00	1	17939-00	1	17940-00	1	17941-00	1	17942-00	1	17943-00	1	17944-00	1	17945-00	1	17946-00	1	17947-00	1	17948-00	1	17949-00	1	17950-00	1	17951-00	1	17952-00	1	17953-00	1	17954-00	1	17955-00	1	17956-00	1	17957-00	1	17958-00	1	17959-00	1	17960-00	1	17961-00	1	17962-00	1	17963-00	1	17964-00	1	17965-00	1	17966-00	1	17967-00	1	17968-00	1	17969-00	1	17970-00	1	17971-00	1	17972-00	1	17973-00	1	17974-00	1	17975-00	1	17976-00	1	17977-00	1	17978-00	1	17979-00	1	17980-00	1	17981-00	1	17982-00	1	17983-00	1	17984-00	1	17985-00	1	17986-00	1	17987-00	1	17988-00	1	17989-00	1	17990-00	1	17991-00	1	17992-00	1	17993-00	1	17994-00	1	17995-00	1	17996-00	1	17997-00	1	17998-00	1	17999-00	1	18000-00	1
---	----------	---	----------	---	----------	---	----------	---	----------	---	----------	---	----------	---	----------	---	----------	---	----------	---	----------	---	----------	---	----------	---	----------	---	----------	---	----------	---	----------	---	----------	---	----------	---	----------	---	----------	---	----------	---	----------	---	----------	---	----------	---	----------	---	----------	---	----------	---	----------	---	----------	---	----------	---	----------	---	----------	---	----------	---	----------	---	----------	---	----------	---	----------	---	----------	---	----------	---	----------	---	----------	---	----------	---	----------	---	----------	---	----------	---	----------	---	----------	---	----------	---	----------	---	----------	---	----------	---	----------	---	----------	---	----------	---	----------	---	----------	---	----------	---	----------	---	----------	---	----------	---	----------	---	----------	---	----------	---	----------	---	----------	---	----------	---	----------	---	----------	---	----------	---	----------	---	----------	---	----------	---	----------	---	----------	---	----------	---	----------	---	----------	---	----------	---	----------	---	----------	---	----------	---	----------	---	----------	---	----------	---	----------	---	----------	---	----------	---	----------	---	----------	---	----------	---	----------	---	----------	---	----------	---	----------	---	----------	---	----------	---	----------	---	----------	---	----------	---	----------	---	----------	---	----------	---	----------	---	----------	---	----------	---	----------	---	----------	---	----------	---	----------	---	----------	---	----------	---	----------	---	----------	---	----------	---	----------	---	----------	---	----------	---	----------	---	----------	---

REVISIONS

REV	DESCRIPTION	DATE	BY
1	ISSUED TO PURCHASING & PRODUCTION	1/4/03	MPR/BA

LA1068-00

LA1068-00



- NOTES
1. UNLESS OTHERWISE SPECIFIED ALL WIRE IS 22 AWG.
 2. REF. DWG'S
 - GENERATOR HARNESS= L7751-00
 - INTERNAL & SWITCH HARNESS= L7780-00
 - ENGINE HARNESS= L7780-00
 - GRN. POTIAL HARNESS= L7782-00
 - PCB= L5118-01 (3 P.A.)
 - TEST HARNESS= L7785-00
 3. BEFORE PACKING, SECURE HARNESS WITH VOOBIS-00 TIE WAMP ON RIGHT SIDE POST.

REV	DESCRIPTION	DATE	BY
1	ISSUED TO PURCHASING & PRODUCTION	1/4/03	MPR/BA

REV	DESCRIPTION	DATE	BY
1	ISSUED TO PURCHASING & PRODUCTION	1/4/03	MPR/BA

REV	DESCRIPTION	DATE	BY
1	ISSUED TO PURCHASING & PRODUCTION	1/4/03	MPR/BA

REV	DESCRIPTION	DATE	BY
1	ISSUED TO PURCHASING & PRODUCTION	1/4/03	MPR/BA

REV	DESCRIPTION	DATE	BY
1	ISSUED TO PURCHASING & PRODUCTION	1/4/03	MPR/BA

REV	DESCRIPTION	DATE	BY
1	ISSUED TO PURCHASING & PRODUCTION	1/4/03	MPR/BA

REV	DESCRIPTION	DATE	BY
1	ISSUED TO PURCHASING & PRODUCTION	1/4/03	MPR/BA

REV	DESCRIPTION	DATE	BY
1	ISSUED TO PURCHASING & PRODUCTION	1/4/03	MPR/BA

LPG SYSTEM

LPG TANK

The LPG storage tank on the Coach House is located on the driver side, inboard of the frame on all Ford powered models and outside the frame on the 240/241 models. Only experienced personnel should fill the tank. There is a remote fill port (on Ford powered models) located behind the side entrance door on the passenger side of the motor home. There is a remote fill switch located below the remote fill port. Push the remote fill switch handle in for filling only, and pull out for normal operation.

The remote fill switch requires constant power while pulled to the out (or on) position. While vehicle is parked or stored it is recommended to push the remote fill switch in (to the off position) so the auxiliary batteries will not be drained. The switch is designed to meet safety requirements that power must be off when filling tank.

The 240/241 models have a direct fill valve. Turn off any LPG appliance when filling the tank. Valve is located behind the driver's side lower front door.

LPG REGULATOR

The LPG system uses a two-stage regulator to control the pressure to the LPG appliances to assure the proper functioning and safe operation of the appliances. The regulator is located under the floor of the motor home near the LPG storage tank and is enclosed in a protective shield to prevent damage to the regulator or clogging of the vent. If the motor home is driven through heavy snow or mud, the vent opening should be checked to make sure that it is not clogged by snow, mud or ice. An opening in the bottom of the shelf allows access to the vent.

REGULATOR FREEZE UP

Under some conditions, moisture may be present in the LP gas in your tank and this can cause the regulator to freeze up, stopping flow to the appliances. This condition occurs more frequently in cold weather or at higher altitudes and usually can be cured or prevented by having methanol injected into the LPG tank. Only experienced, qualified personnel should do this. Some LPG stations, especially at higher altitudes, will already have methanol in the LP gas they dispense. It is suggested that if you plan to go to a colder climate or a higher altitude, that you wait until you reach those areas before completely filling your tank. The small cost difference is well worth it to reduce the risk of freeze up.

MANDATORY CONSUMER INFORMATION

The following information is being supplied to conform with the mandates of ANSI A119.2/NFPA 501C-1987 and to ensure the greatest possible degree of safety for our customers. Please study this information carefully and keep it in your vehicle at all times.

Should this information be misplaced, additional copies are available from our corporate office for a nominal charge.

A. **WARNING:** LP-Gas containers shall not be placed or stored inside the vehicle. LP-Gas containers are equipped with safety devices which relieve excessive pressure by discharging gas to the atmosphere.

B.

WARNING:

**IT IS NOT SAFE TO USE COOKING
APPLIANCES FOR COMFORT HEATING!**

**COOKING APPLIANCES NEED
FRESH AIR FOR SAFE OPERATION.**

BEFORE OPERATION:

1. Open overhead vent or turn on exhaust fan and
2. Open window.

This warning label has been located in the cooking area to remind you to provide an adequate supply of fresh air for combustion. Unlike homes, the amount of oxygen supply is limited to the size of the recreational vehicle, and proper ventilation when using the cooking appliance(s) will avoid dangers. Cooking appliances should not be used for comfort heating as the danger of asphyxiation is greater when the appliance is used for long periods of time.

C. A warning label has been located near the LP-Gas container. This label reads:

**DO NOT FILL LP-GAS CONTAINER(S) TO
MORE THAN 80 PERCENT OF CAPACITY**

Overfilling the LP-Gas container can result in uncontrolled flow which can cause fire or explosion. A properly filled container will contain approximately 80 percent of its volume as liquid LP-Gas. Safety regulation prevents filling over 80%.

D. WARNING: Portable fuel-burning equipment, including wood and charcoal grills and stoves, must not be used inside the recreational vehicle. The use of this equipment inside the recreational vehicle may cause fires or asphyxiation.

E. WARNING: Storage of LP-Gas containers, gasoline or other flammable liquids inside your vehicle - even for short periods of time - presents a risk of fire and/or explosion. All flammable liquids should be stored safely in a well-ventilated area outside your vehicle and in proper containers.

F. The following label has been placed in the vehicle near the range area:

IF YOU SMELL GAS

1. Extinguish any open flames, pilot lights and all smoking materials.
2. Do not touch electrical switches.
3. Shut off the gas supply at the tank valve(s) or gas supply connection.
4. Open doors and other ventilating openings.
5. Leave the area until odor clears.
6. Have the gas system checked and leakage source corrected before using again.

G. LP-Gas regulators must always be installed with the diaphragm vent facing downward. Regulators that are not in compartments have been equipped with a protective cover. Make sure that regulator vent faces downward and the cover is kept in place to minimize vent blockage which could result in excessive gas pressure causing fire or explosion.

COMFORT AND CONVENIENCE

FURNACE (LPG)

The furnace is mounted at floor level under the front dinette in the 221/261 models; under the lounge chair in the 272 model; under the galley for the 232 model; under the rear bed (sofa) for the 240/241 models and is controlled by a wall-mounted thermostat. The furnace blower and automatic ignition are powered by the 12-volt DC system. The manufacturers operating instructions, enclosed in this section, should be reviewed before using the furnace. As with an LPG appliance, all precautionary notes and labels should be carefully reviewed for maximum safety and comfort.

COMFORT CONTROL SYSTEM (THERMOSTAT)

The comfort control system will operate the furnace, A/C, heater via A/C, fan and speed. Read the operation instructions for optimum use.

AIR CONDITIONER

The air conditioner for the Coach House is manufactured specifically for RV use and is located in the center of the motor home on the roof with outlets in the ceiling. The A/C selector is on the digital combo thermostat located on the sofa/dinette overhead cabinet-driver's side. The thermostat switch should be adjusted to the desired temperature level and controls the operation of the compressor.

The air conditioner operates on the 120 volt AC system and will operate only when the external power cord is connected to a power source or when the generator is operating.

ROOF VENT FANS (2)

Front @ galley and Rear @ bath

The roof vent fan is located in the ceiling and is operated by cranking up the fan cover and by turning on the switch by the fan and setting the thermostat knob. The 12-volt DC system powers the fan. The fans have an automatic rain sensor.

MARINE TOILET

The marine toilet in the Coach House is connected directly to a waste holding tank and has a water line routed to it for rinsing and flushing. When using the toilet, either the water demand pump should be turned on (water pump switch is located on the side of the lavatory sink cabinet) or the city water connection made and pressurized to assure a water supply to the toilet. There are separate levers on the side of the toilet for rinsing and flushing, and the instructions on the toilet should be followed for best results.

BLACK & GRAY WATER HOLDING TANKS

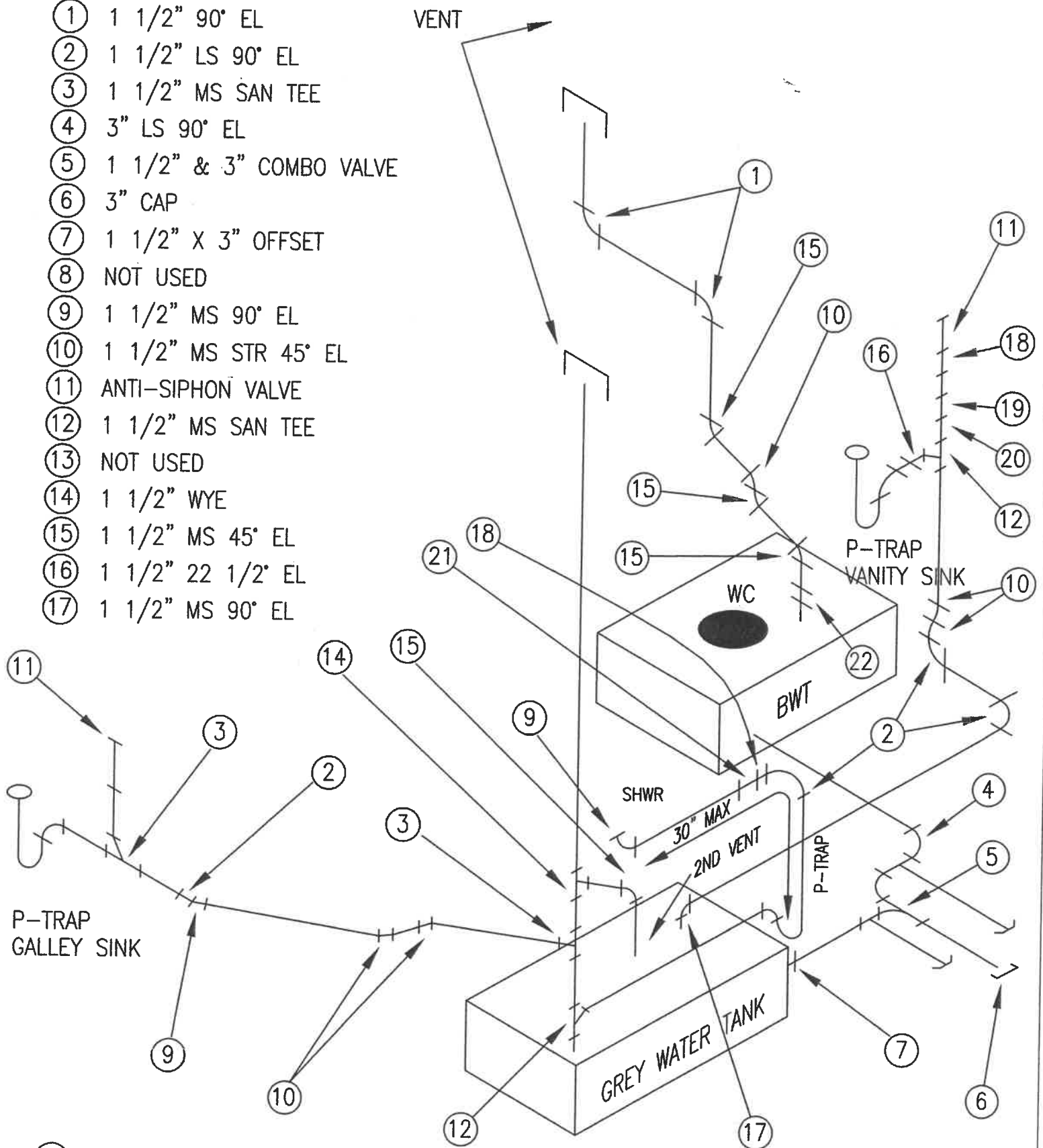
The connection for draining the holding tanks are located on the left side of the motor home. To drain the system, connect one end of an appropriate drain hose to the drain connection and the other end to a proper dump station. After the connections are made, opening the dump valve or valves can dump the system. The valves are located under the motor home on the driver's side rear and are labeled.

Dump the black water holding tank first, then dump the gray water holding tank.


BLACK WATER HOLDING TANK FLUSH SYSTEM

Drain the black water holding tank and leave valve open. Attach garden hose to the water inlet (located behind the utility access door behind the drivers side rear tires, black cap). Turn on water (from outside source) to spray the interior of the black water holding tank. Continue to leave drain valve open until flushed. Turn off water, disconnect hose and close valve.

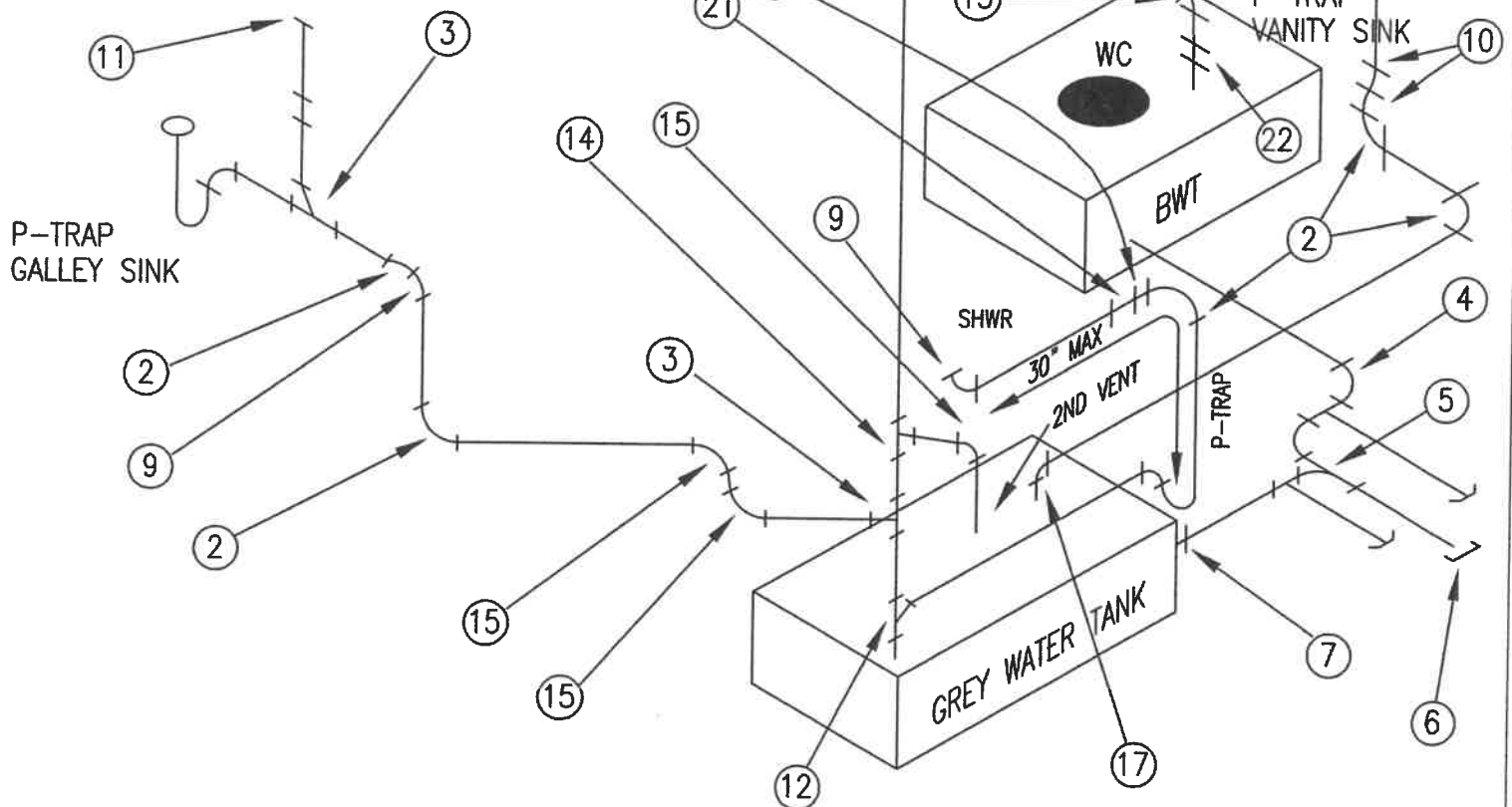
- ① 1 1/2" 90° EL
- ② 1 1/2" LS 90° EL
- ③ 1 1/2" MS SAN TEE
- ④ 3" LS 90° EL
- ⑤ 1 1/2" & 3" COMBO VALVE
- ⑥ 3" CAP
- ⑦ 1 1/2" X 3" OFFSET
- ⑧ NOT USED
- ⑨ 1 1/2" MS 90° EL
- ⑩ 1 1/2" MS STR 45° EL
- ⑪ ANTI-SIPHON VALVE
- ⑫ 1 1/2" MS SAN TEE
- ⑬ NOT USED
- ⑭ 1 1/2" WYE
- ⑮ 1 1/2" MS 45° EL
- ⑯ 1 1/2" 22 1/2° EL
- ⑰ 1 1/2" MS 90° EL




- ⑱ THREADED FEM ADAPTER
- ⑲ THREADED MALE ADAPTER
- ⑳ FEM ADAPTER COUPLING
- ㉑ FEM ADAPTER WITH NUT
- ㉒ UNION

1061	22	4-18-07	CONNECT STR 45 TO 45 & ADD ㉒ .
1009	21	10-12-06	ADD ⑱ & ㉑ TO SHOWER P-TRAP.
ECR	REV	DATE	DESCRIPTION
PLUMBING & TANK ISO 230 PLATINUM			 Coach House Van Motor Homes
			No. PB 109

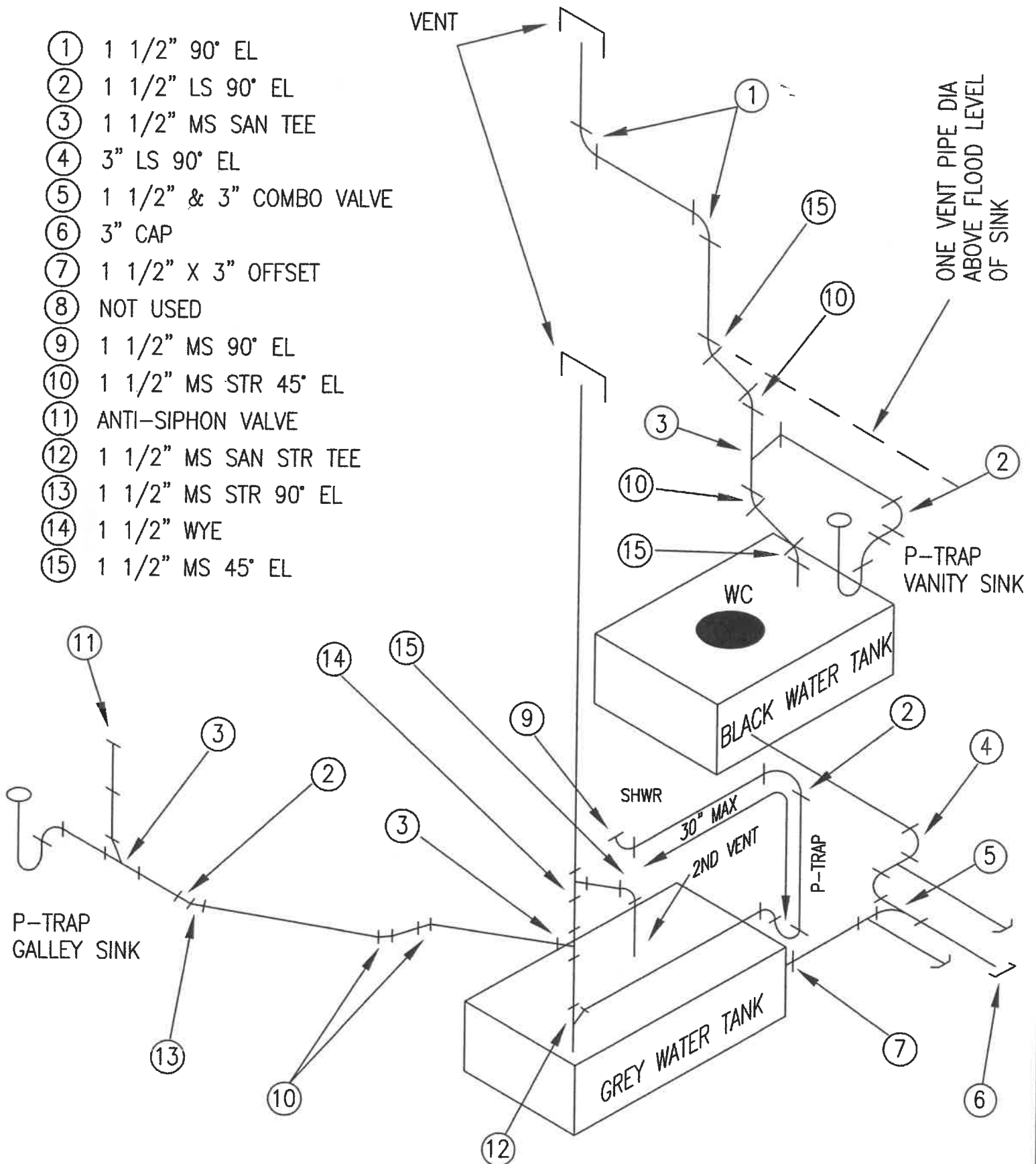
- ① 1 1/2" 90° EL
- ② 1 1/2" LS 90° EL
- ③ 1 1/2" MS SAN TEE
- ④ 3" LS 90° EL
- ⑤ 1 1/2" & 3" COMBO VALVE
- ⑥ 3" CAP
- ⑦ 1 1/2" X 3" OFFSET
- ⑧ NOT USED
- ⑨ 1 1/2" MS 90° EL
- ⑩ 1 1/2" MS STR 45° EL
- ⑪ ANTI-SIPHON VALVE
- ⑫ 1 1/2" MS SAN TEE
- ⑬ NOT USED
- ⑭ 1 1/2" WYE
- ⑮ 1 1/2" MS 45° EL
- ⑯ 1 1/2" 22 1/2° EL
- ⑰ 1 1/2" MS 90° EL




- ⑱ THREADED FEM ADAPTER
- ⑲ THREADED MALE ADAPTER
- ⑳ FEM ADAPTER COUPLING
- ㉑ FEM ADAPTER WITH NUT
- ㉒ UNION

1061	10	4-18-07	CONNECT STR 45 TO 45 & ADD ㉒.
1009	9	10-12-06	ADD ⑱ & ㉑ TO SHOWER P-TRAP.
0997	8	10-3-06	CHANGE VANITY SINK ANTI-SIPHON FITTINGS.
ECR	REV	DATE	DESCRIPTION
PLUMBING & TANK ISO 231 PLATINUM			 Coach House Van Motor Homes
			No. PB110

- ① 1 1/2" 90° EL
- ② 1 1/2" LS 90° EL
- ③ 1 1/2" MS SAN TEE
- ④ 3" LS 90° EL
- ⑤ 1 1/2" & 3" COMBO VALVE
- ⑥ 3" CAP
- ⑦ 1 1/2" X 3" OFFSET
- ⑧ NOT USED
- ⑨ 1 1/2" MS 90° EL
- ⑩ 1 1/2" MS STR 45° EL
- ⑪ ANTI-SIPHON VALVE
- ⑫ 1 1/2" MS SAN STR TEE
- ⑬ 1 1/2" MS STR 90° EL
- ⑭ 1 1/2" WYE
- ⑮ 1 1/2" MS 45° EL

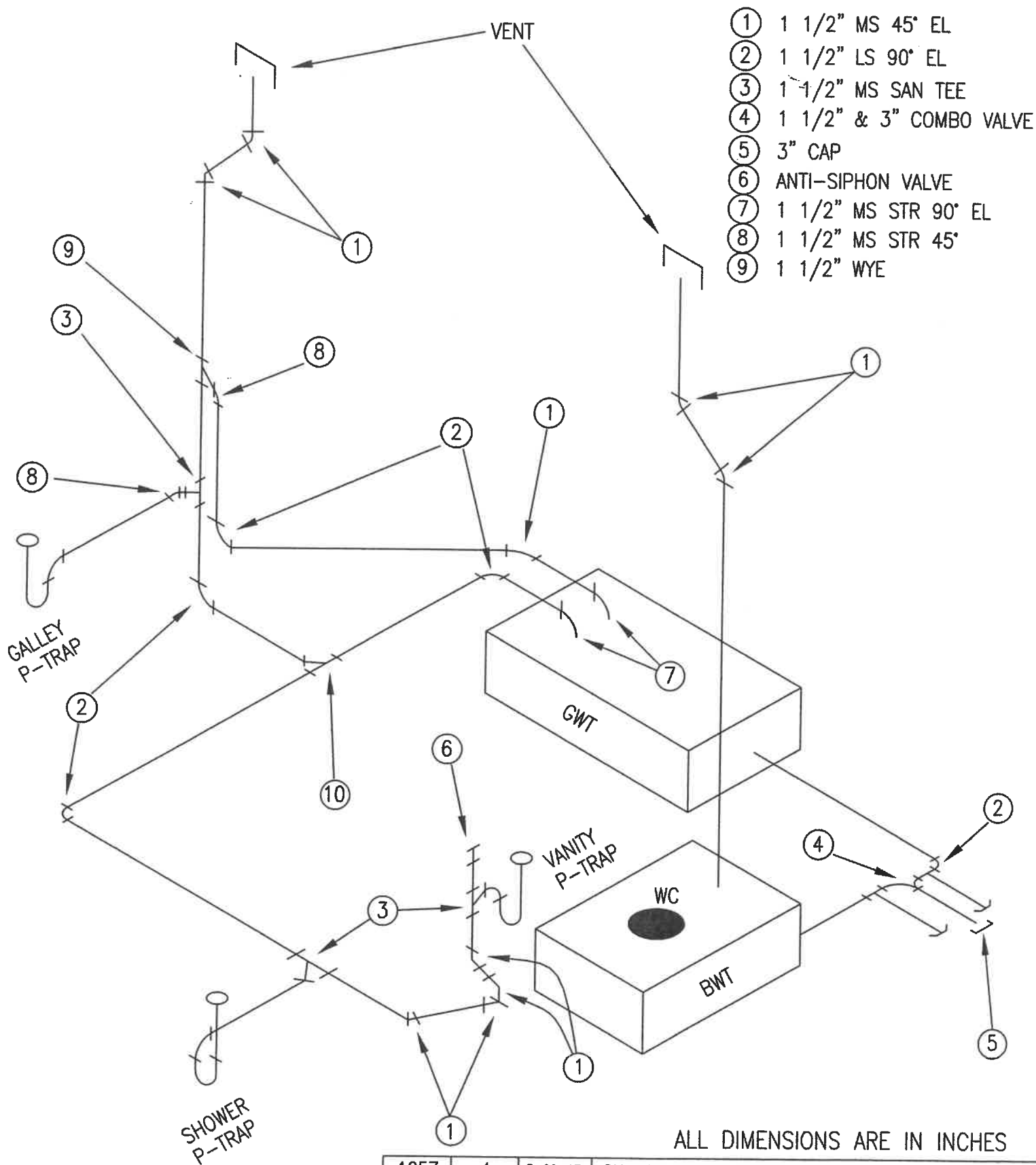


0707	4	1-10-05	ADD 45° ELBOWS TO BWT VENT.
ECR	REV	DATE	DESCRIPTION
PLUMBING & TANK ISO 270 PLATINUM			 Coach House Van Motor Homes
			No. PB 111

-
- This diagram illustrates a plumbing system for a greywater recycling unit. It features two main tanks: a 'BLACK WATER TANK' and a 'GREY WATER TANK'. The system includes a 'SHWR' (shower) connected to the greywater tank, a 'WC' (water closet) connected to the blackwater tank, and a 'P-TRAP VANITY SINK'. The plumbing is detailed with various pipe sizes (e.g., 1/2", 3/4", 1", 1 1/2", 2", 3", 4", 6", 8", 10", 12", 14", 16", 18", 20", 24", 30", 36", 42", 48", 54", 60", 66", 72", 78", 84", 90", 96", 102", 108", 114", 120", 126", 132", 138", 144", 150", 156", 162", 168", 174", 180", 186", 192", 198", 204", 210", 216", 222", 228", 234", 240", 246", 252", 258", 264", 270", 276", 282", 288", 294", 300", 306", 312", 318", 324", 330", 336", 342", 348", 354", 360", 366", 372", 378", 384", 390", 396", 402", 408", 414", 420", 426", 432", 438", 444", 450", 456", 462", 468", 474", 480, 486, 492, 498, 504, 510, 516, 522, 528, 534, 540, 546, 552, 558, 564, 570, 576, 582, 588, 594, 600, 606, 612, 618, 624, 630, 636, 642, 648, 654, 660, 666, 672, 678, 684, 690, 696, 702, 708, 714, 720, 726, 732, 738, 744, 750, 756, 762, 768, 774, 780, 786, 792, 798, 804, 810, 816, 822, 828, 834, 840, 846, 852, 858, 864, 870, 876, 882, 888, 894, 900, 906, 912, 918, 924, 930, 936, 942, 948, 954, 960, 966, 972, 978, 984, 990, 996, 1000) and fittings. A '2ND VENT' is shown with a '30" MAX' dimension. A 'P-TRAP' is located between the tanks. A 'VENT' pipe is shown exiting the system. A note indicates 'ONE VENT PIPE DIA ABOVE FLOOD LEVEL OF SINK'. The diagram is numbered 1 through 12, corresponding to the numbered circles in the image.

Coach House
Van Motor Homes

No. PB 112



ALL DIMENSIONS ARE IN INCHES

1057	4	3-22-07	CHANGE VANITY DRAIN.
0926	3	3-15-06	REVERSE FLOOR LOCATION FOR DRAIN & 2ND VENT.
0901	2	1-24-06	ADD 2ND VENT FOR GWT TO ORIGINAL DRAIN.
ECR	REV	DATE	DESCRIPTION

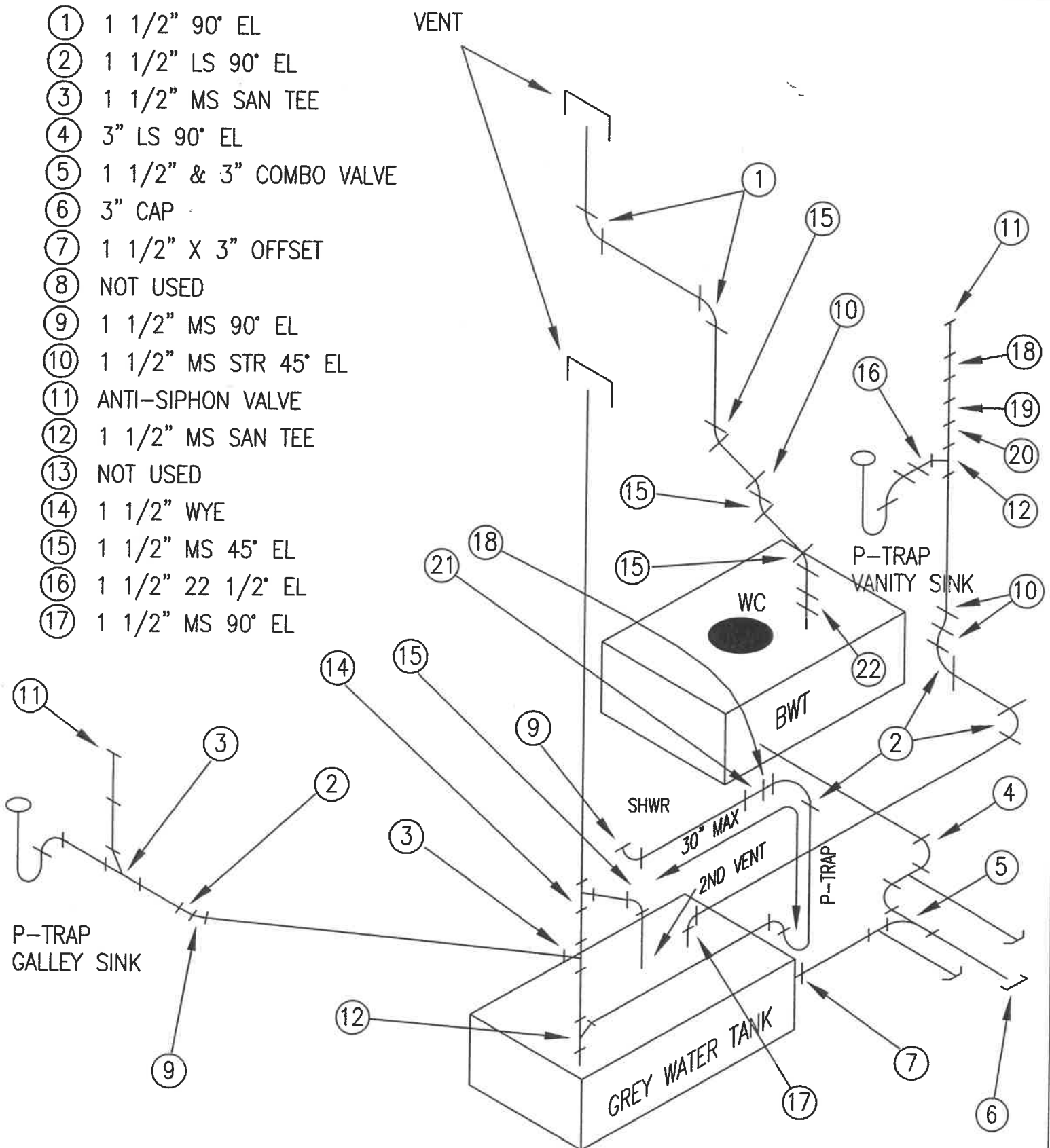
PLUMBING & TANK ISO
G272 PLATINUM



Coach House
Van Motor Homes

No. PB113

- ① 1 1/2" 90° EL
- ② 1 1/2" LS 90° EL
- ③ 1 1/2" MS SAN TEE
- ④ 3" LS 90° EL
- ⑤ 1 1/2" & 3" COMBO VALVE
- ⑥ 3" CAP
- ⑦ 1 1/2" X 3" OFFSET
- ⑧ NOT USED
- ⑨ 1 1/2" MS 90° EL
- ⑩ 1 1/2" MS STR 45° EL
- ⑪ ANTI-SIPHON VALVE
- ⑫ 1 1/2" MS SAN TEE
- ⑬ NOT USED
- ⑭ 1 1/2" WYE
- ⑮ 1 1/2" MS 45° EL
- ⑯ 1 1/2" 22 1/2° EL
- ⑰ 1 1/2" MS 90° EL



- ⑱ THREADED FEM ADAPTER
- ⑲ THREADED MALE ADAPTER
- ⑳ FEM ADAPTER COUPLING
- ㉑ FEM ADAPTER WITH NUT
- ㉒ UNION

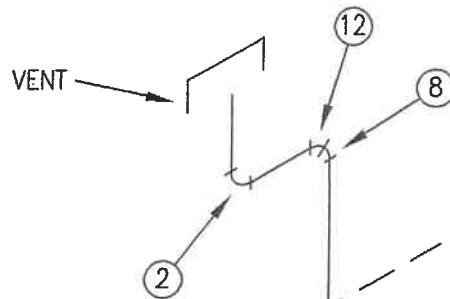
1061	7	4-18-07	CONNECT STR 45 TO 45 & ADD ㉒ .
1009	6	11-7-06	ADD ⑱ & ㉑ TO SHOWER P-TRAP.
0997	5	10-3-06	CHANGE VANITY SINK ANTI-SIPHON FITTINGS.
ECR	REV	DATE	DESCRIPTION

PLUMBING & TANK ISO
261 PLATINUM



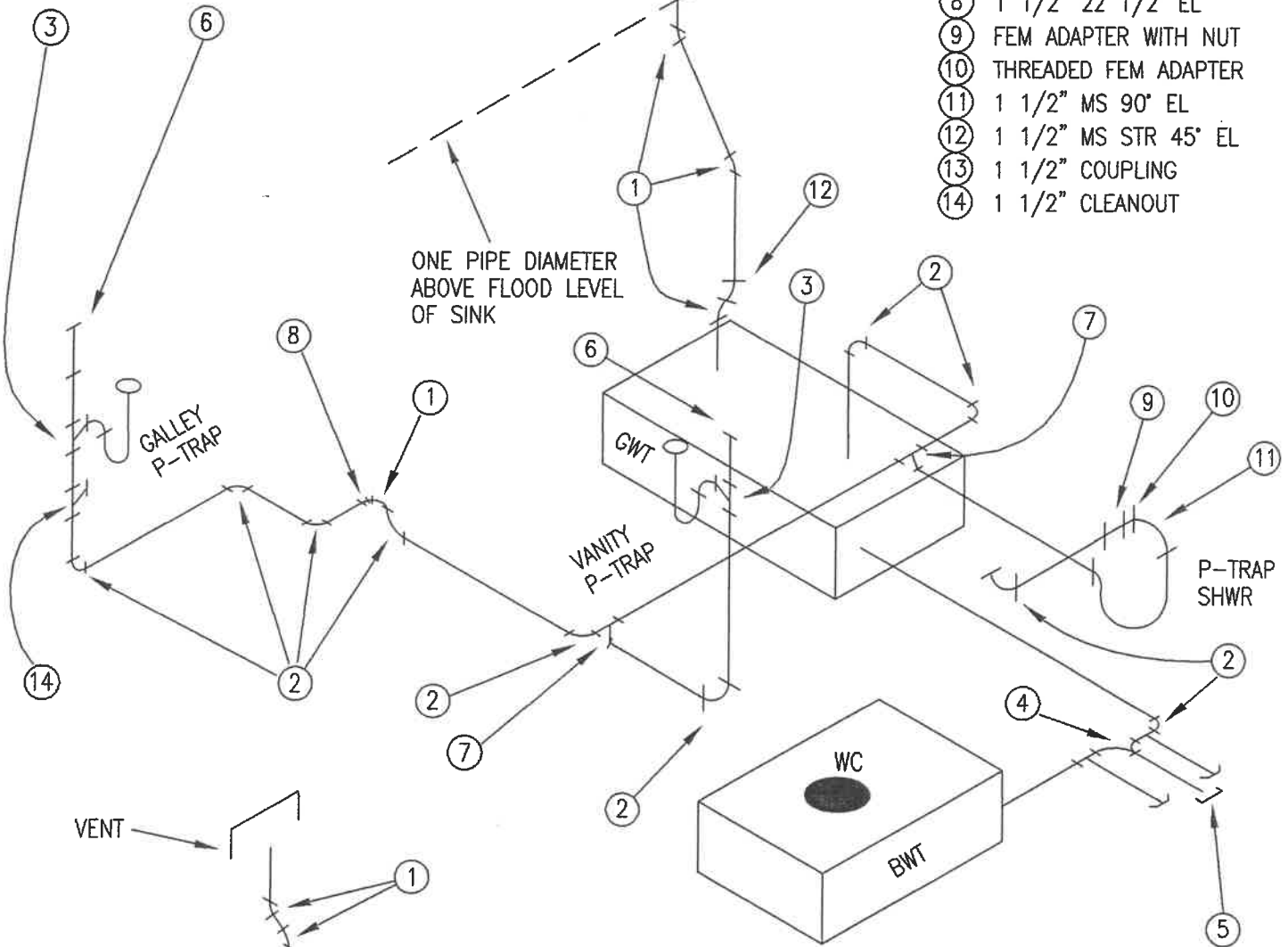
Coach House
Van Motor Homes

No. PB 114



- ① 1 1/2" MS 45° EL
- ② 1 1/2" LS 90° EL
- ③ 1 1/2" MS SAN TEE
- ④ 1 1/2" & 3" COMBO VALVE
- ⑤ 3" CAP
- ⑥ ANTI-SIPHON VALVE
- ⑦ 1 1/2" T-Y
- ⑧ 1 1/2" 22 1/2° EL
- ⑨ FEM ADAPTER WITH NUT
- ⑩ THREADED FEM ADAPTER
- ⑪ 1 1/2" MS 90° EL
- ⑫ 1 1/2" MS STR 45° EL
- ⑬ 1 1/2" COUPLING
- ⑭ 1 1/2" CLEANOUT

ONE PIPE DIAMETER
ABOVE FLOOD LEVEL
OF SINK



ALL DIMENSIONS ARE IN INCHES

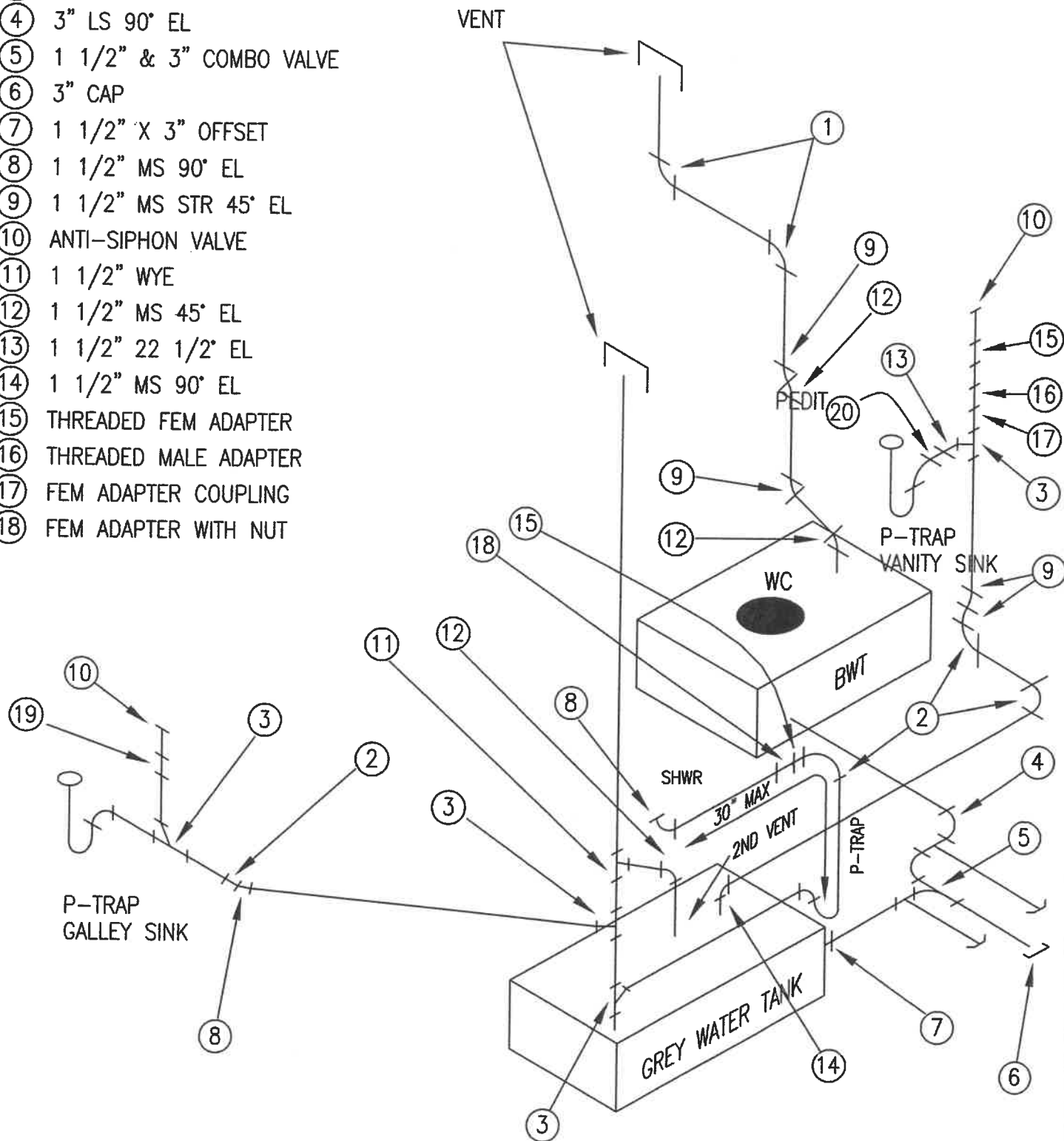
1147	9	1-28-08	ADD CLEANOUT GALLEY DRAIN, T-Y WAS SAN TEE SHWR DRAIN.
1118	8	10-19-07	CHANGE GALLEY DRAIN.
1099	7	8-8-07	ADD BWT VENT.
1080	6	7-9-07	CHANGE VANITY DRAIN.
1072	5	5-29-07	ADD ① ⑫ & ⑧ ⑫ TO GWT VENT.
1031	4	12-29-06	CHANGE GALLEY DRAIN & VENT.
1017	3	11-21-06	CHANGE GALLEY VENT, ADD SHWR P-TRAP.
ECR	REV	DATE	DESCRIPTION


PLUMBING & TANK ISO
H232 PLATINUM

Coach House
Van Motor Homes

No. PB115

- ① 1 1/2" 90° EL
- ② 1 1/2" LS 90° EL
- ③ 1 1/2" MS SAN TEE
- ④ 3" LS 90° EL
- ⑤ 1 1/2" & 3" COMBO VALVE
- ⑥ 3" CAP
- ⑦ 1 1/2" X 3" OFFSET
- ⑧ 1 1/2" MS 90° EL
- ⑨ 1 1/2" MS STR 45° EL
- ⑩ ANTI-SIPHON VALVE
- ⑪ 1 1/2" WYE
- ⑫ 1 1/2" MS 45° EL
- ⑬ 1 1/2" 22 1/2° EL
- ⑭ 1 1/2" MS 90° EL
- ⑮ THREADED FEM ADAPTER
- ⑯ THREADED MALE ADAPTER
- ⑰ FEM ADAPTER COUPLING
- ⑱ FEM ADAPTER WITH NUT



	0	11-7-06	
ECR	REV	DATE	DESCRIPTION
PLUMBING & TANK ISO J221 PLATINUM			 Coach House Van Motor Homes
			No. PB116

GALLEY

REFRIGERATOR (3-WAY)

Refer to the refrigerator instruction manual enclosed in this section for lighting and operation of the refrigerator. A temperature activated fan is mounted in the compartment behind the refrigerator to prevent over heating. This fan will come on when the temperature reaches a certain level in the compartment and will not shut off until the temperature has lowered to a certain level.

RANGE

The three-burner range (261/271/272 models) supplied with the Coach House does have a spark ignition. Turn spark knob to light each burner. As with any LPG appliance caution should be taken when operating. Refer to the RV Owners Manual for more details.

The two-burner range (221/232/240/241 models) is a match light style.

WATER PUMP

When parked where city or park water is available, the motor home should be connected by using a hose connected to the city water connection. The water pump should not be used when the motor home is connected to city water. The Coach House has potable water tank with a 12-volt DC demand pump connected to the system. The switch for the demand pump is located on the range hood and should only be turned on when water is needed. DO NOT operate the pump dry or when there is no water in the potable water tank. (A second water pump switch is located beside the lavatory sink.)

Drain valves are supplied on the potable water tank and in the water system near the pump to allow draining the system to prevent freezing.

WATER PUMP (CONT'D)

The potable water fill is located on the side of the motor home behind the labeled door. The potable water tank can also be filled from city water pressure. Open a valve to fill fresh (potable) water tank – turn off when tank is full. The location of the valve (on all models) is inside exterior door – drivers side behind rear wheel.

LPG/110V ELECTRIC WATER HEATER – 240/241models

The dual power water heater uses auto-ignition, operated by a switch on the range hood. Refer to the manufacturers manual for operating instructions of the model in your unit. The 110V lighted switch is located in the overhead cabinet beside the refrigerator. Do not use the water heater without water. An exterior on/off switch for the electric portion of the water heater is inside the exterior service door.

The models 221/232/261/271/272 are equipped with a 120v a/c elect/motor aid water heater. The motor aid will automatically heat water when you drive the motor home. The 120v a/c can be used while the motor home is parked. (Always operate the water heater with water in the system.)

MICROWAVE/CONVECTION OVEN

The microwave oven is mounted above or beside the refrigerator and only operates on the 120 volt AC system. Refer to the manufacturers instruction manual, enclosed in this section, for operator instructions and helpful cooking hints.

EXHAUST FAN

An exhaust fan is mounted above the range and operates on the 12 volt DC system. The switch on the front operates the fan.

MONITOR PANEL

The monitor panel located on the range hood will indicate the water level in the potable water tank, the level in the holding tanks, the level of propane gas, and the charge level of the auxiliary batteries. To check the level, push the test button on the panel and observe the level indicator lights that are lit to read the level.

HOLD TANK 2 = GREY WATER

HOLD TANK 1 = BLACK WATER

FRESH WATER = POTABLE WATER

L.P. GAS TANK = PROPANE GAS

BATTERY COND. = AUXILIARY BATTERIES

SANITIZING THE POTABLE WATER SYSTEM

To assure complete sanitation of your potable water system, the following procedures are recommended for a new system, for one that has not be used for a period of time, and for one which may have become contaminated.

1. Prepare a chlorine solution using one (1) gallon of water and one-quarter ($1/4$) cup of household bleach (5% sodium hypochlorite solution). With tank empty pour one (1) gallon of solution into the tank for each fifteen (15) gallons of tank capacity.
2. Complete filling of tank with fresh water. Operate all faucets to release trapped air. Pressure entire system with pump, if available, and turn off pump.
3. Allow to stand for three (3) hours.
4. Drain and flush with fresh potable water.
5. To remove excessive chlorine taste or odor, which may remain, prepare a solution of one (1) quart vinegar to five (5) gallons of water and pour into tank. Allow solution to agitate in tank by vehicle motion (several days if possible).
6. Drain tank and flush with fresh potable water.

HOW TO WINTERIZE

BLOW DRY METHOD

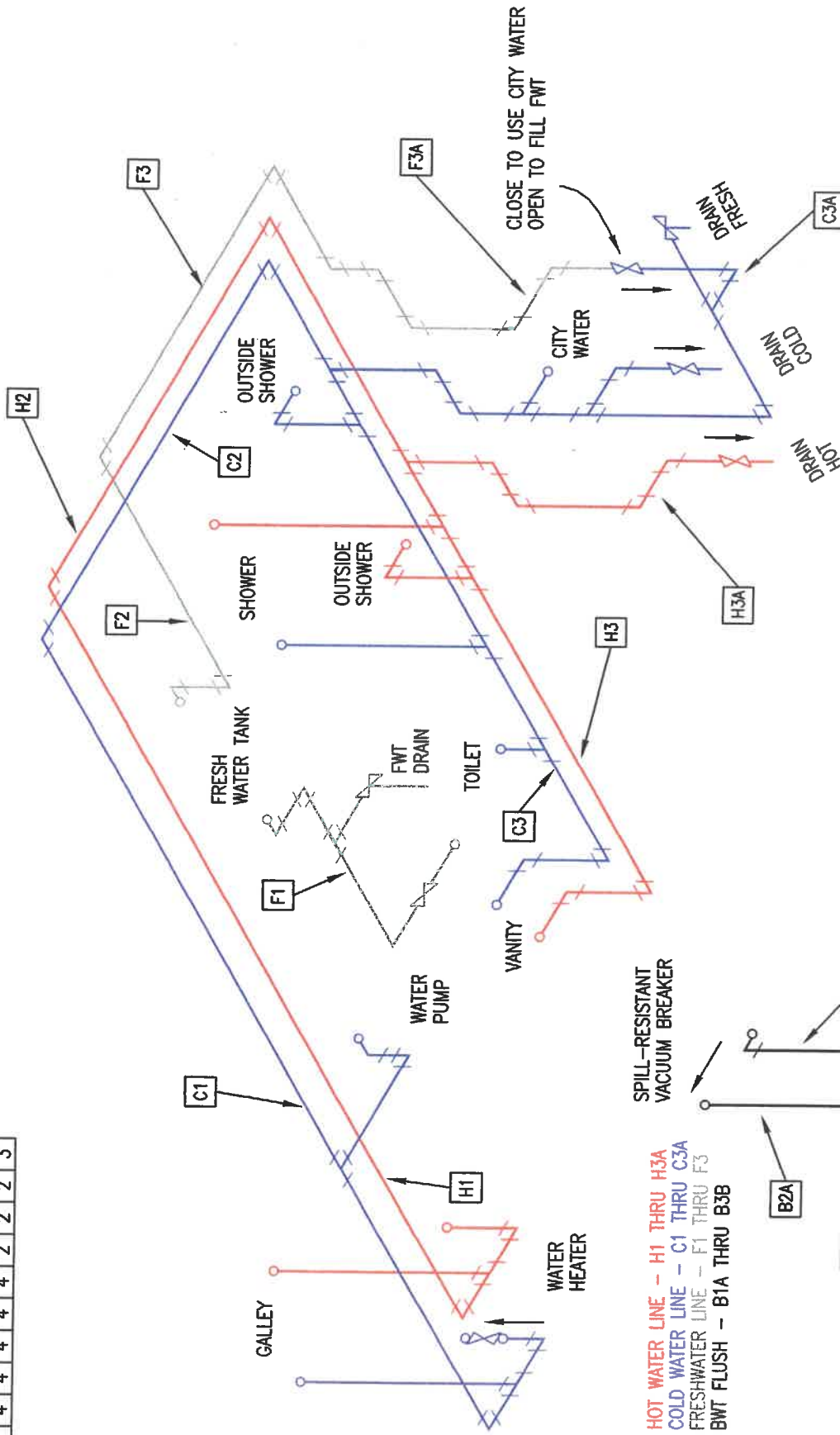
1. Empty and thoroughly rinse waste holding tank.
2. Drain all water lines. Drain valves are located behind a hinged panel on the rear of the driver's side of motor home. Be sure to drain shower, toilet and all faucets. If a water purifier or filter is in line, remove the cartridge. Close all faucets. The fresh water tank on the slide-out models is located in the rear closet. The tank drain is assessable inside the door:
 - a. 221/232/261 the lower edge of the closet
 - b. 271/272 the passenger side under galley
 - c. 240/241 under the bed or sofa
3. Blow lines dry by building-up pressure and open one faucet at a time letting any extra water escape.
4. Drain water heater (outside) and by-pass water heater to disconnect cold and hot water lines. By-pass kit to by-pass heater is standard equipment.
5. Pour **non-toxic antifreeze** into water tank. Build up pressure again or activate water pump and open faucets one at a time to be sure to get antifreeze up into each faucet. Flush toilet until antifreeze flushes into bowl.
6. Pour approximately 1 cup of antifreeze into each sink trap and shower trap.

HOW TO WINTERIZE

HAND PUMP METHOD

1. Follow above steps 1 through 4.
2. Make sure all faucets are closed.
3. Hook up hand pump to kitchen faucet with tube end in a gallon jug of non-toxic antifreeze. Open hot water faucet at kitchen and begin to pump. After pumping approximately $\frac{1}{2}$ gallon, open hot water faucet in bathroom sink until antifreeze runs through. Do the same for the two.
4. Do the same now at cold water lines in kitchen, bathroom and shower. Do not forget to winterize the toilet.
5. Pour a little extra antifreeze down kitchen sink, bathroom sink, shower and toilet drains.

SHEET NO.	1	2	3	4	5	6	7	8	9
REVISION	4	4	4	4	4	2	2	2	3



SPILL-RESISTANT
VACUUM BREAKER

HOT WATER LINE - H1 THRU H3A
COLD WATER LINE - C1 THRU C3A
FRESHWATER LINE - F1 THRU F3
BWT FLUSH - B1A THRU B3B

WATER INLET
(NO CHECK VALVE)

BWT FLUSH

ECR	REV	DATE	DESCRIPTION
1238	4	10-21-08	CHANGE H2, H3, H3A, C2, C3A.z
1173	3	5-2-08	CHANGE H2, H3, H3A, C2, C3A, F3, ADD F3A.
1140	2	3-7-08	CHANGE SHEET 1 THRU 9 FOR M0010.

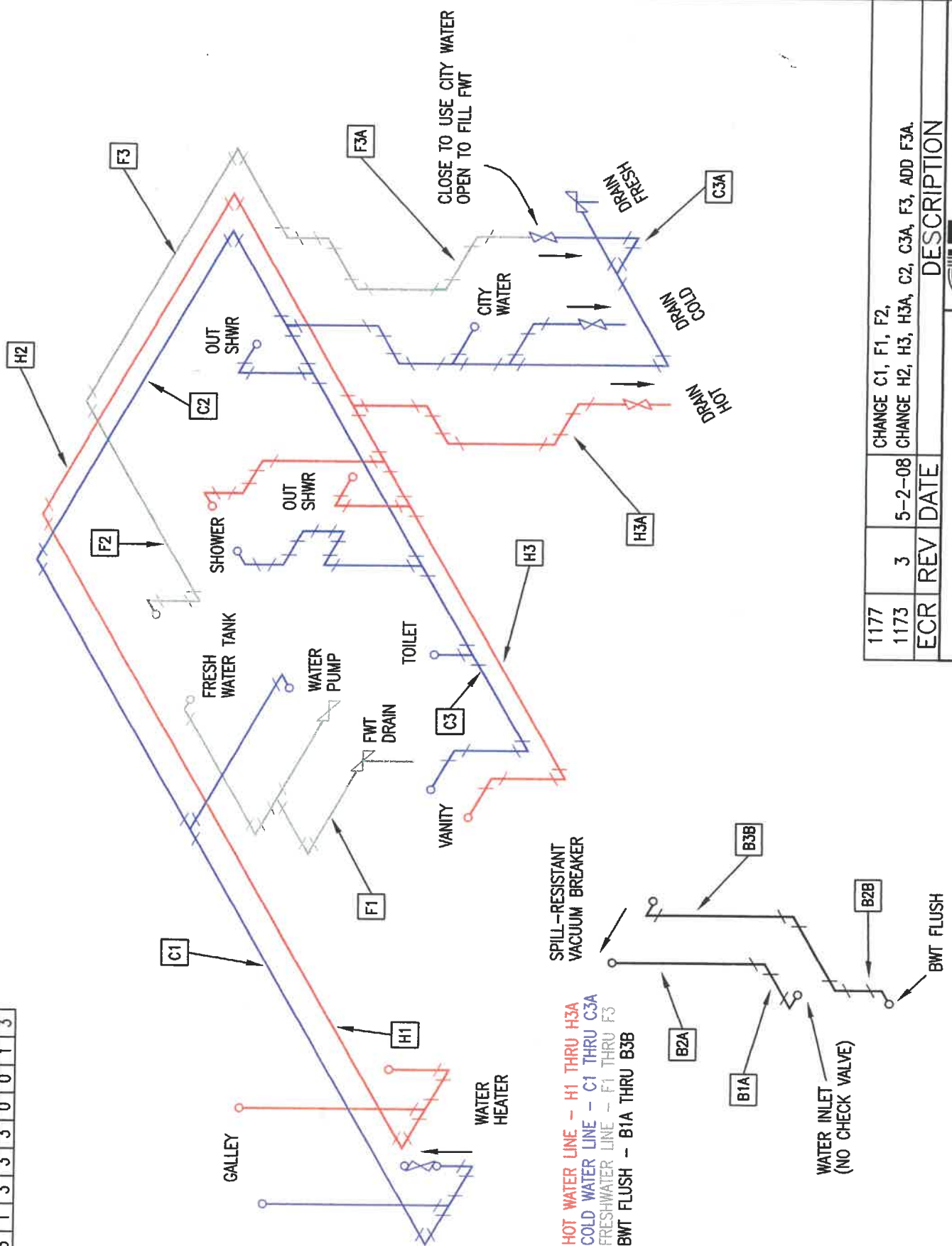
M241 PLATINUM II
WATER SYSTEM
(REAR BED MODEL)

Coach House
Van Motor Homes

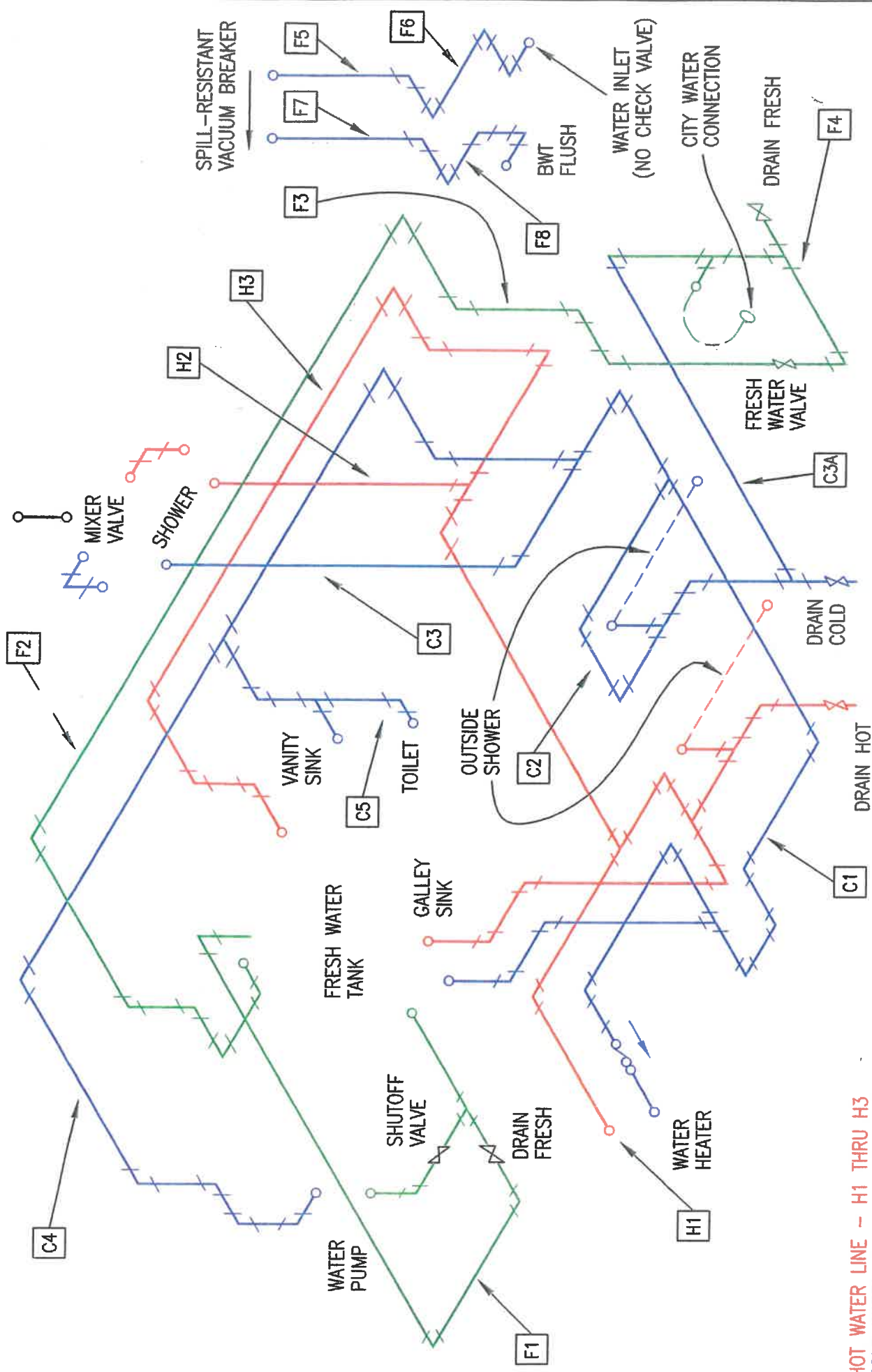
SHEET 1

No. CH-P-2401

SHEET NO.	1	2	3	4	5	6	7	8	9
REVISION	3	1	3	3	3	0	0	1	3



1177	CHANGE C1, F1, F2,	DESCRIPTION
1173	CHANGE H2, H3, H3A, C2, C3A, F3, ADD F3A.	
ECR	REV DATE	
3	5-2-08	
M241 PLATINUM II WATER SYSTEM (REAR SOFA MODEL)		
No. CH-P-2403		



HOT WATER LINE - H1 THRU H3
 COLD WATER LINE - C1 THRU C5
 FRESHWATER LINE - F1 THRU F8

1112	6	10-5-07	CHANGE H1, C3A, F8, F3, H3, C4, F2, C1 & C2 & DRAIN VALVE ASSY.
1090	5	3-23-07	CHANGE F1 & F2.
1044	4	2-12-07	CHANGE F2.
ECR	REV	DATE	DESCRIPTION

Coach House
Van Motor Homes

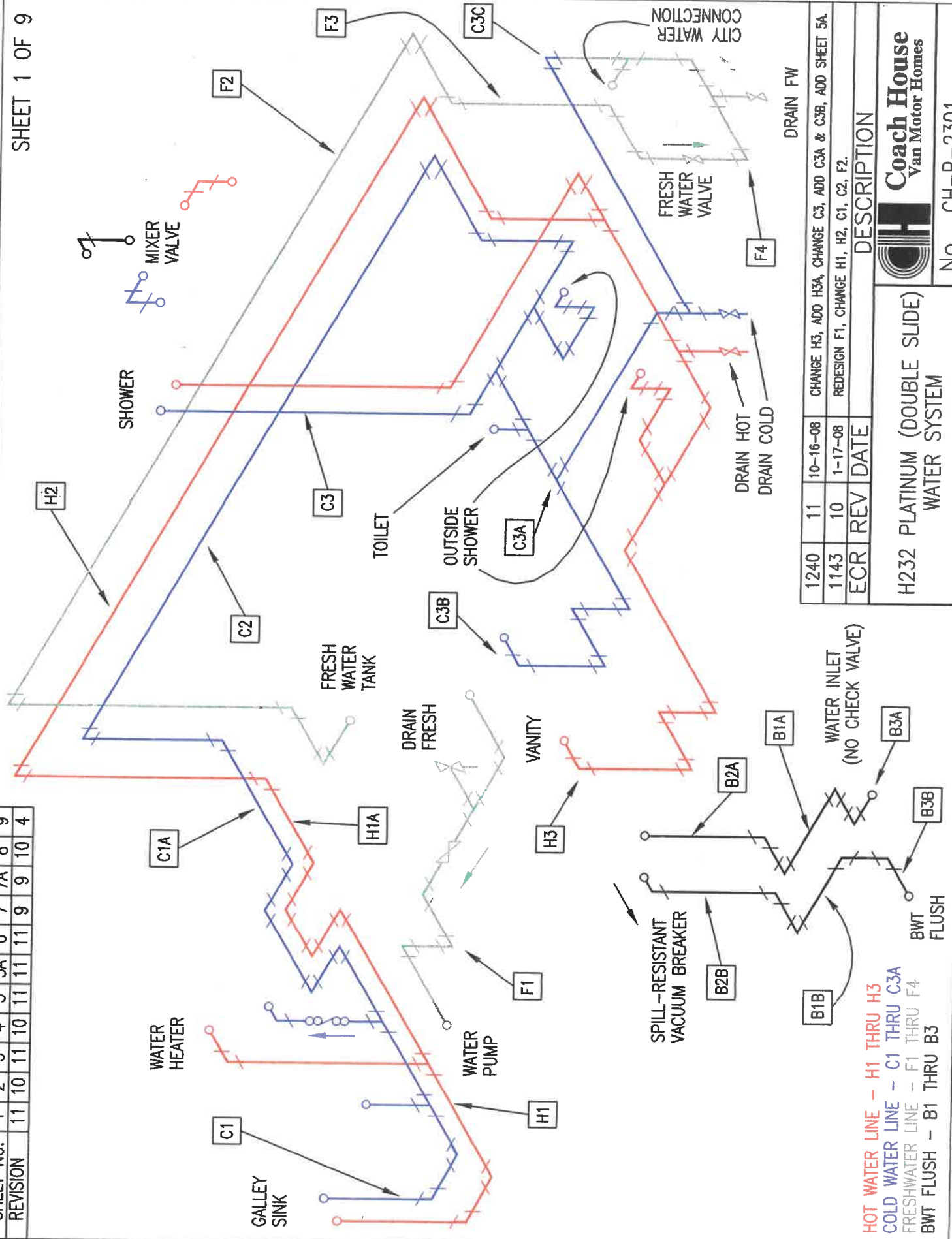
J221 PLATINUM
WATER SYSTEM

No. CH-P-2201

SHEET NO.	1	2	3	4	5	6	7	7A	8	9
REVISION	6	6	6	6	6	6	6	6	6	6

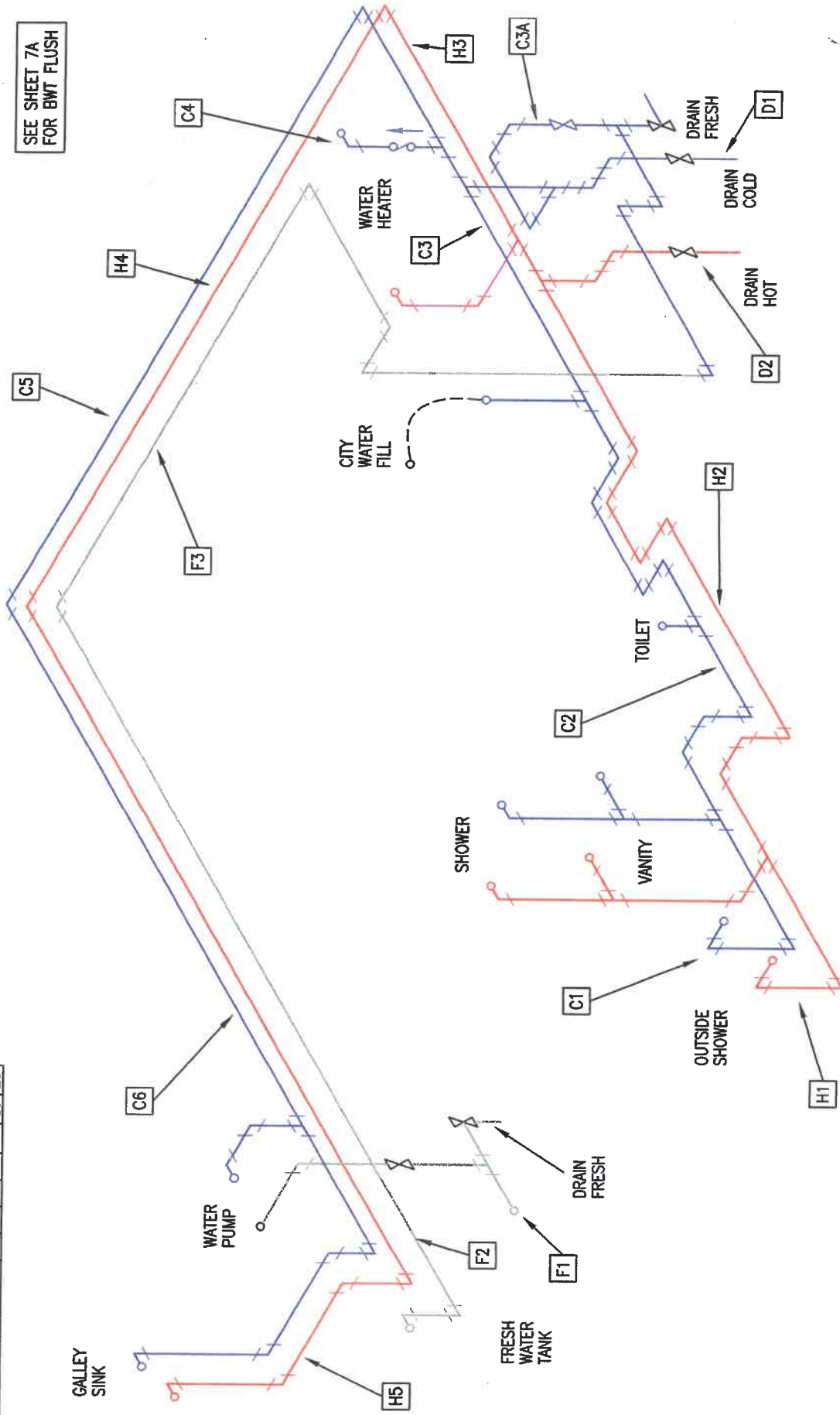
SHEET NO.	1	2	3	4	5	5A	6	7	7A	8	9
REVISION	11	10	11	10	11	11	11	11	9	9	4

SHEET 1 OF 9



SHEET NO.	1	2	3	3A	4	5	5A	6	7	7A
REVISION	23	23	23	23	23	23	23	23	23	23

SEE SHEET 7A
FOR BWT FLUSH



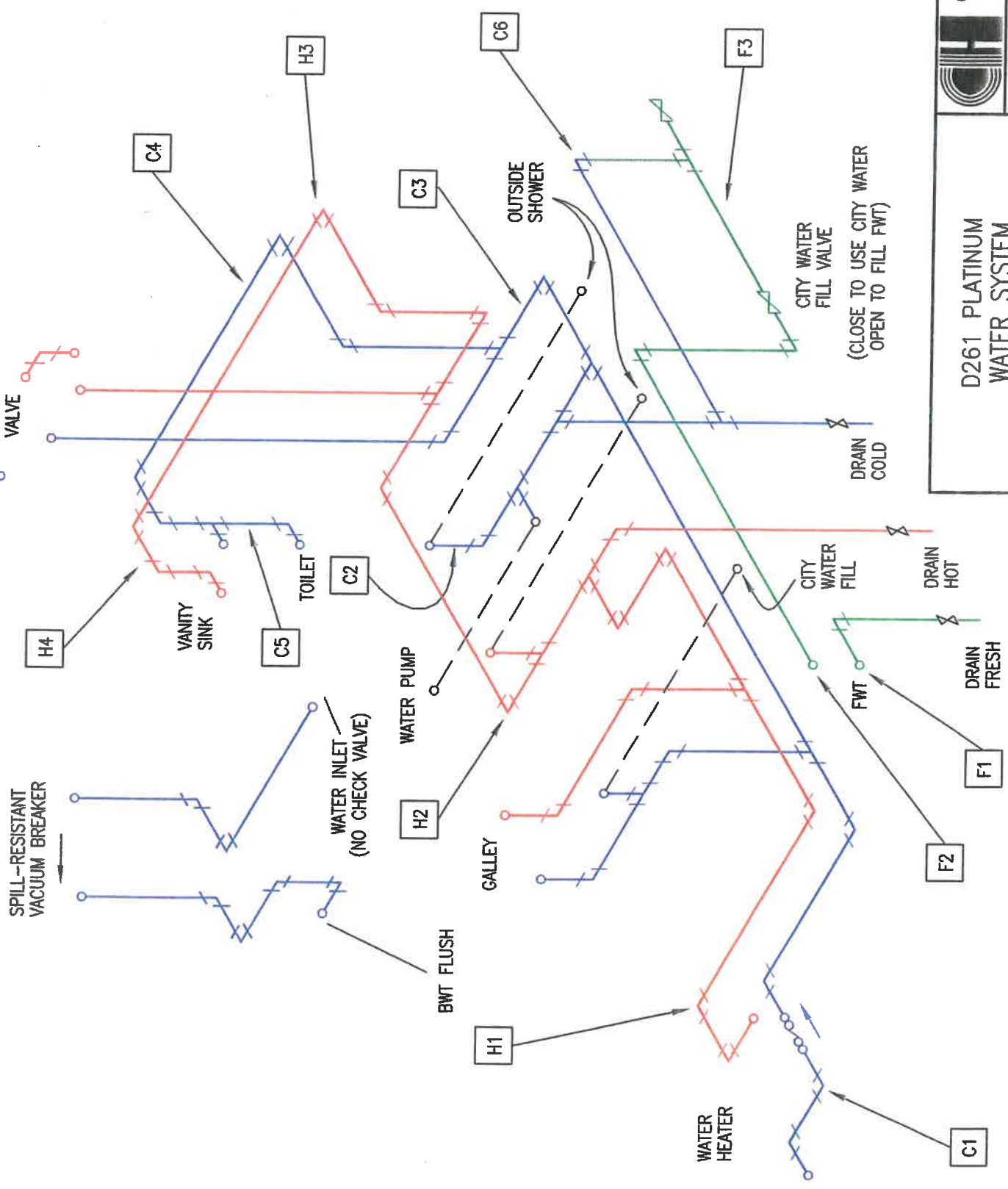
HOT WATER LINE - H1 THRU H5
COLD WATER LINE - C1 THRU C6
FRESHWATER LINE - F1 THRU F3

1325	23	5-18-10	MAKE MODEL G SAME AS MODEL K EXCEPT FOR BWT FLUSH.
ECR	REV	DATE	DESCRIPTION
			G272 PLATINUM WATER SYSTEM
			Coach House Van Motor Homes
			No. CH-P-2801

ALL DIMENSIONS ARE IN INCHES

REVISION	6	10	7	10	5	5	8	0
HOT WATER LINE - H1 THRU H4								
COLD WATER LINE - C1 THRU C6								
FRESHWATER LINE - F1 THRU F3								

SHEET 1 OF 8



ECR	REV	DATE	DESCRIPTION
1089	10	7-23-30	CHANGE C4 & H4.
0976	9	8-31-06	CHANGE C3 & H3.
0949	8	5-17-06	ADD BWT FLUSH TO SHEET 1 & 7A.
0775	7	5-3-05	UPDATE C1.
0751	6	3-16-05	UPDATE C1 & H1.
0735	5	2-25-05	REVERSE CITY WATER FILL.

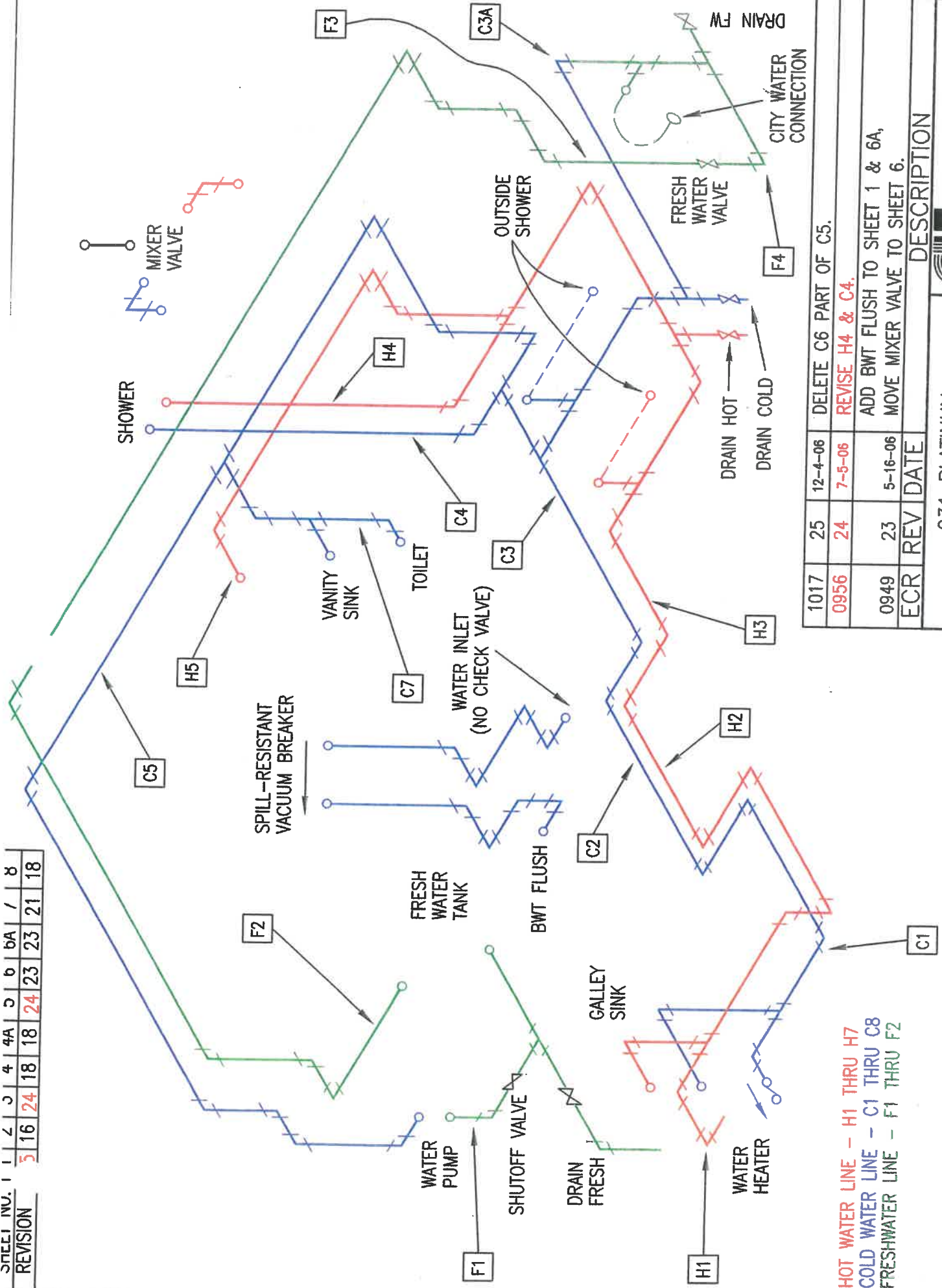


D261 PLATINUM WATER SYSTEM

Coach House
Van Motor Homes

No. CH-P-2601

SHEET NO.	1	2	3	4	4A	5	6	6A	7	8
REVISION	5	16	24	18	18	24	23	23	21	18



1017	25	12-4-06	DELETE C6 PART OF C5.
0956	24	7-5-06	REVISE H4 & C4.
0949	23	5-16-06	ADD BWT FLUSH TO SHEET 1 & 6A, MOVE MIXER VALVE TO SHEET 6.
ECR	REV	DATE	DESCRIPTION

Coach House
Van Motor Homes

231 PLATINUM
WATER SYSTEM
(NEW SLIDE-OUT)

No. CH-P-0007

MISCELLANEOUS

FIRE EXTINGUISHER

A fire extinguisher is mounted in the Coach House behind the passenger seat on the right side of the motor home. The gauge on the unit should be checked periodically for pressure level. If the indicator is in the red, the unit should either be repaired or replaced.

SMOKE DETECTOR

A smoke detector is mounted near the ceiling, behind the passenger front seat (rear side of side entrance door). The detector is battery (9v) operated and should be tested on a regular basis. Refer to the manufacturers instruction sheet, enclosed in this section, for the proper testing procedure and battery replacement. The smoke detector should be tested after each time the motor home has been in storage, before each use and at least once each week during use of the motor home.

CARBON MONOXIDE DETECTOR

A carbon monoxide detector is mounted in the following locations for your model.

221/232/240/241-

On overhead cabinet behind galley – driver's side

261 - Above cabinets – front end of lavatory shower

272 - Above closet in bedroom – driver's side

The auxiliary battery and the chassis battery, whichever is stronger, power the detector and 3 amp fuses located behind the panel on which the detector is mounted, protect the unit. A green light on the detector front indicates that it is operating and any failure in the light should be investigated and remedied immediately. The detector should be tested on a regular basis as per the manufacturers instructions.

TELEVISION CONNECTION AND ANTENNA

An external antenna is mounted on the roof and the signal can vary while the motor home is in motion, parked in a fringe area, or near large obstacles. An external cable connection is supplied and an A/B switch is mounted near the TV to allow switching between cable TV and antenna. Button A is used for antenna; Button B is for Cable TV (or the optional satellite dish). You must turn off the antenna at the hook-up behind the front TV to receive cable on the front TV. The antenna has a remote control to align the antenna to the TV station you want.

RADIO

Refer to the Ford Chassis owner's manual for the operating instructions of the radio.

DELUXE HANDLING PACKAGE (STANDARD)

The deluxe handling package permits the air helper springs to be adjusted (raise or lower air pressure) left side or right side. The switch is located behind the driver's seat on the overhead cabinet face. An air compressor is located under the chassis behind the driver door. Air pressure may be adjusted while driving or parked.

HYDRAULIC ROOM EXTENSION (OPTIONAL on 240 model/ standard on 221/232/241/261/271 & 272 models)

Read Owner's manual for room extension system before operating. Level motor home and set parking brake before extending slide-out portion. Turn ignition key to accessory position, turn control panel key to ON position and push switch to extend. Turn off control panel and ignition switch and remove keys.

To retract, set parking brake, turn ignition to accessory position, turn control panel key to ON and push switch to retract. Turn off control panel and ignition switch and remove keys.

POWER SOFA/BED (Standard on 221/232/240/241/271 & 272 models)

The power sofa/bed has 4 functions.

1. Move sofa away from outer wall.
2. Convert sofa to bed.
3. Move bed toward outside wall to adjoin stationary cushion.
4. Convert bed to sofa & move toward outside wall.

You may operate the power sofa/bed with slide-out room extended or with room not extended.

#625 FULLY AUTOMATIC LEVELING SYSTEM

(OPTIONAL on 221/232 & 261 models/standard on 272 models)
(not available on 240/241 models)

See HWH operator's manual for complete information of the #625 computer controlled leveling system.

INVERTER/CHARGER (OPTIONAL)

The 2000 watt inverter/charger is available on the Coach House Platinum and Platinum II.

It operates from the 12V auxiliary batteries and inverts 12V power DC to 120 AC power.

The inverter has a remote control located on the driver/passenger cab overhead cabinet. The remote control has operation and battery condition monitoring of DC volts. Detailed information on the inverter/charger and the remote control is included in the Dimensions Unlimited owner's manual.

Turn off the inverter "charger" (opt) while using the generator to supply 120 a/c power to run the air conditioner. You may use the inverter "charger" (opt) while 120 a/c power is supplied by shore power.

The standard converter "charger" can be used (automatic) to supply 120 a/c power from the generator or shore power.

To turn off the inverter:

Turn on the lighted remote control.

Turn off the inverter. The remote control lighted panel will turn off automatically.

*However, the inverter shut-off is NOT automatic. The inverter may be ON while the remote panel is not lighted – therefore, running down the auxiliary batteries.